

SOLITUDE GAIA

liveaboards • Palau



DATA SHEET



ABOUT

INTRODUCTION

Introducing the Solitude Gaia – a scuba diving liveaboard that transforms the core experience of exploring and adventuring on the open ocean. Completed in the year 2023, this vessel, stretching an impressive 40 metres in length, is more than just a ship; it's a testament to innovation and meticulous craftsmanship. With a robust steel hull, it stands as a symbol of stability, ensuring your safety and peace of mind throughout your diving journey. But that's not all; the Solitude Gaia's aluminium superstructure adds a unique touch, not only contributing to its stability but also lowering the centre of gravity for an even more secure and comfortable voyage.

What sets the Solitude Gaia apart is not just its structural excellence but also its deep commitment to creating an environment where guests can truly feel at home. Designed to meet the highest standards of the classification society BKI and the stringent requirements for a passenger ship, it was crafted with the intent to share the profound passion and wonder of the world beneath the ocean's surface.

Stepping on board, you'll find that the Solitude Gaia exudes a feel and vibe that inspire freedom of the mind and a sense of openness. It encourages reflection on the timeless virtues that guide our lives: humility, charity, chastity, gratitude, temperance, patience, and diligence. These virtues are not just words; they are embedded in the very essence of the vessel, shaping your experience.

The curated décor, with its soothing neutral tones, offers a space that exudes consideration, intent, comfort, elegance, and a subtle touch of luxury. It's a deliberate choice, designed to reinforce gratitude and appreciation for the remarkable world that lies beneath the waves.

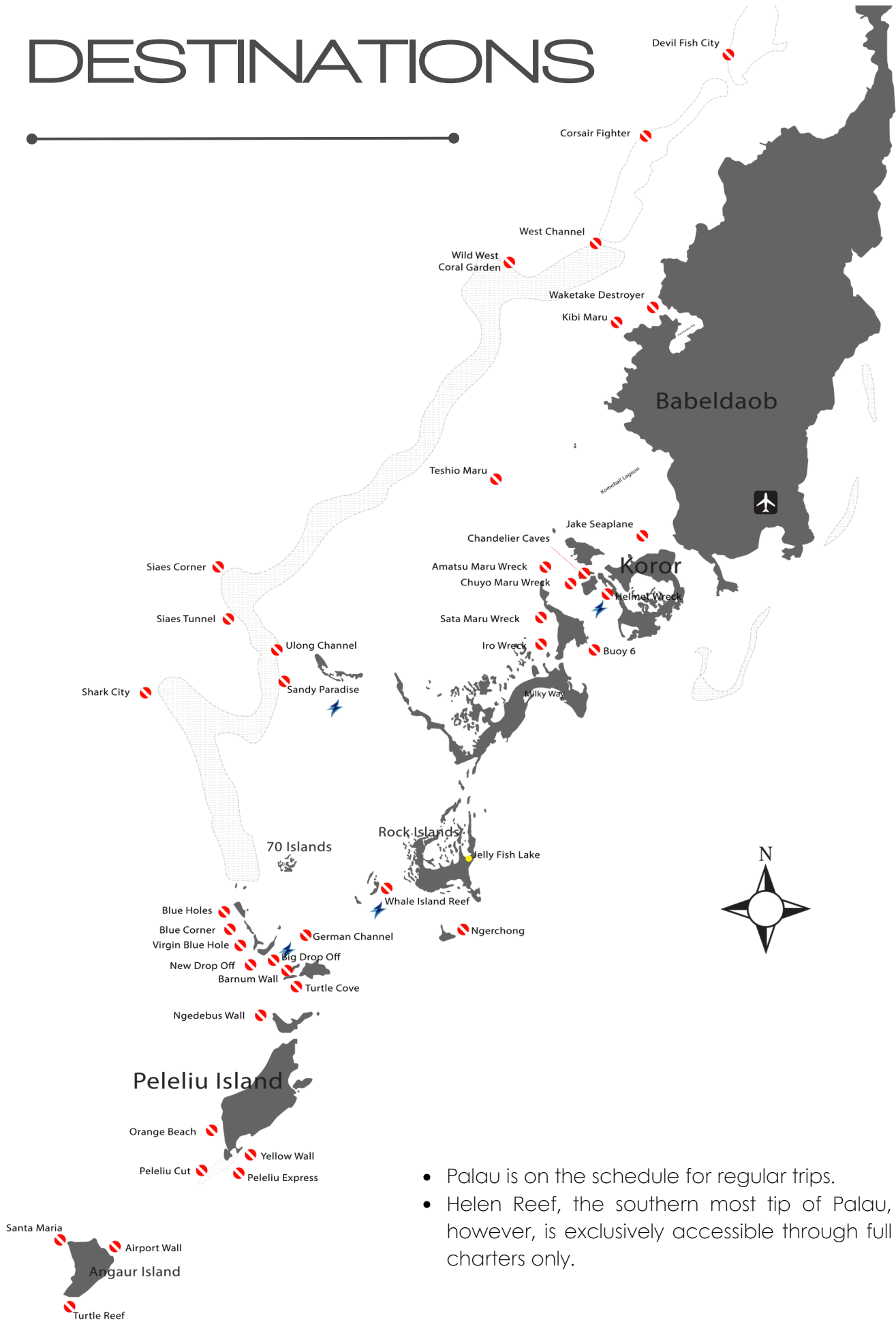
With a cruising speed of 10 knots, Solitude Gaia offers a sense of serenity and adventure combined. It boasts nine cabins and a sumptuous spa suite, ensuring the utmost comfort for up to 18 guests. As you embark on your scuba diving journey aboard this remarkable vessel, you'll not only explore the ocean's depths but also embark on a voyage of self-discovery, where the virtues of the sea and the vessel itself converge to create an experience like no other.

THE RATES

Please refer to schedule availability information on www.solitude.world or emailus@solitude.world for cruise itineraries of Palau and the Philippines.

SOLITUDE

DESTINATIONS



- Palau is on the schedule for regular trips.
- Helen Reef, the southern most tip of Palau, however, is exclusively accessible through full charters only.

VESSEL FACTS

Type and Year Built Steel Mono-Hull with aluminium superstructure, launched in 2023.

Port of Registry/Flagged Koro, Palau

Cruising Itinerary Routes Palau

Gross Registered Tonnage 471t

Length 40m (meters) **Beam** 9m **Draft** 2.3m **or Length** 131.24ft (feet) **Beam** 29.53ft **Draft** 7.55ft

Cruising Speed 10 Knots with top speed 14 Knots

Diesel Capacity 62,256L (16,459.25 US Gal.)

Cruising Range is approximately 4150 nautical miles (7,685km) - with allowances made for weather and variations in manoeuvrability).

Engine & Propulsion twin Yanmar engines 829 HP @ 1900 RPM.

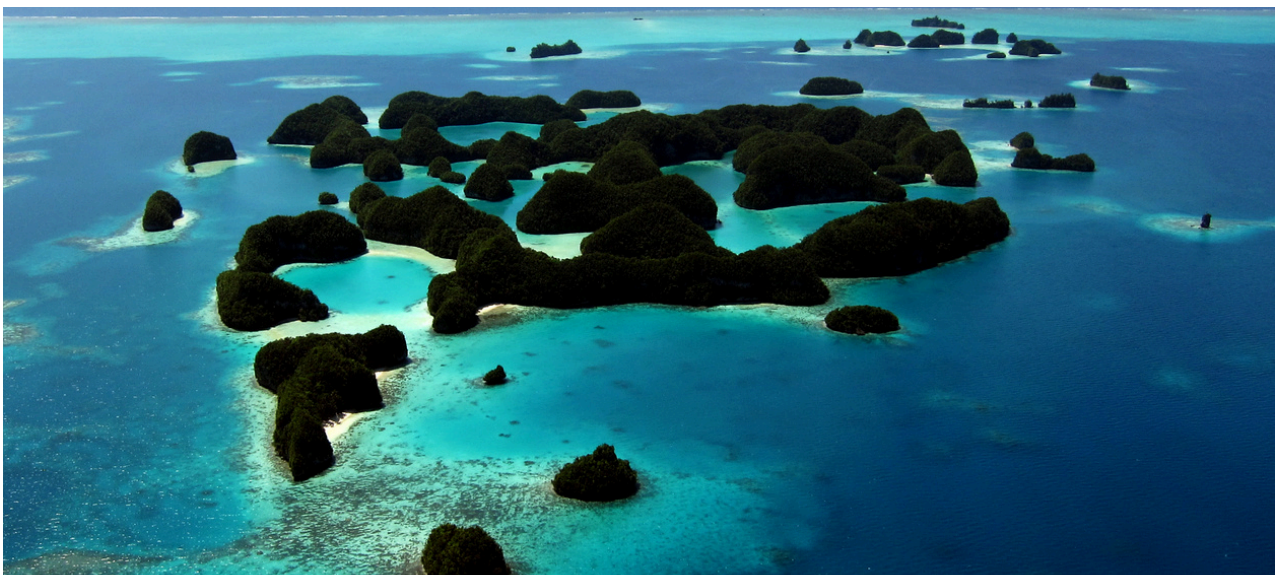
Electricity (2 x BAUDOUIN 6W105S RATED 107KW- 1500RPM) and (1 x WEICHAH WP4CD66E200 50KW/62.5KVA 3PH 50Hz) generators providing 24 hours of 200V to 240V - 50Hz power.

Navigation equipped with local navigation maps, GPS chart plotter, radar (long/short range), weather plotter, and depth sounder.

Communication System VHF/SB radios, VSAT satellite phone & internet

Ship Safety System GMDSS with EPIRB, AIS, life rafts, emergency survival packs, and a semi-automated fire suppression sprinkler system.

Fresh Water Capacity 63,086L (storage) with 3 onboard water-makers each capable of producing 280L of fresh water per hour.



G A I A

THE DIVING

Dive Skiffs there are two purpose-built aluminium boats measuring 6m each, equipped with single 100HP outboard engines.

Support Skiff purpose-built fibreglass boats measuring 6m, equipped with single 100HP outboard engines.

Air Compressors 3 x Bauer Poseidon compressors

Nitrox Membrane System Aaragon

Dive Guides ratio 1 to 6 divers. Private guide service is available for USD150 per diving day (pdd).

Dive Equipment Rental is available, which includes dive computers, but underwater cameras are not included.

Surface Marker Buoy (SMB), Lead Weights & Belt are complimentary but responsible to replace if lost or damaged

Enriched Air Nitrox Diving EANx 28 to 32%, to provide a more suitable M.O.D for divers

Scuba Cylinders of various DIN sizes (York Adaptors available). Twin tanks are not available, side-mount friendly.

Rebreather Support only on full charters with rebreather divers. Organising scrubbers requires advanced notice of 60 days or more, although there is no guarantee. Alternatively, you have the option to order and send them to us. It's important to note that oxygen supply in Palau is both limited and costly.

Medical Oxygen and Comprehensive First Aid Kits are available

FOR YOUR SAFETY

NO SOLO diving is allowed, even if you are certified.

It is mandatory for **ALL** guests engaging in scuba activities to have an audible signalling device (such as a whistle), a dive computer, a surface marker buoy, appropriate dive insurance coverage, a valid dive certification, and have completed waiver Form A and Form C for the activities.

SOLITUDE

DIGITAL AREA

Large Camera Rinsing Tanks rinse tanks with air-gun and towels just for cameras.

Pressurised Air for drying is available.

Camera Setup Bench, Editing and Charging Stations are available.

Universal Power Sockets are available.

Power Type 200V-220V/50Hz

Surge Stabilisation and UPS Sockets are available throughout the Digital Area.

Electrical Plug Adapters and Extensions are available.

E6 Photo Processing is not available.

SOCIAL MEDIA

We encourage you to share your encounters with the fascinating new critters you'll undoubtedly encounter, as well as your enjoyable experiences with us. Feel free to follow, like and tag us on social media platforms:

Instagram

[@Solitude.Gaia](https://www.instagram.com/Solitude.Gaia)

[@solitude.world](https://www.instagram.com/solitude.world)

Facebook

[@SolitudeGaia](https://www.facebook.com/SolitudeGaia)

[@solitudeliveaboardsandresorts](https://www.facebook.com/solitudeliveaboardsandresorts)



G A I A

THE CABINS

Step into Solitude Gaia, where comfort, style and adventure intertwine seamlessly. Featuring nine (9) meticulously designed cabins accommodating up to 18 guests, the vessel reflects thoughtfulness, elegance, and refinement. Each cabin serves as a serene retreat amidst the open sea, symbolising relaxation and refinement. Neutral hues and graceful furnishings establish a timeless atmosphere, fostering introspection and revitalisation.

These areas embody Solitude Gaia's dedication to excellence, offering a spacious and welcoming setting where you can relax, engage with fellow travellers, and rediscover yourself. It's a realm where the peacefulness of the sea coexists harmoniously with the onboard comfort of Solitude Gaia throughout your journey.

OVERVIEW

9 Cabins in Total

- **Upper Deck** | **3 cabins in total, 303, 302, 301:** 2 x Ocean View Staterooms (2 Twin or Double Sharing), 1 x Ocean View Cabin (Double Sharing)
- **Main Deck** | **4 cabins in total, 204, 203, 202, 201:** 4 x Ocean View Cabins (2 Twin and Double Sharing)
- **Below Deck** | **2 cabins in total, 102, 101:** 2 x Interior Cabins (Twin or Double Sharing)

Mattress Sizes

- King Mattresses 198cm x 202cm (Cabins 201 and 202)
- King Mattress 182cm x 202cm (Cabin 303)
- Single/Twin Mattresses 101cm x 202cm or 202cm x 204cm (Cabins 301, 302, 203, 204)
- Single/Twin Mattresses 100cm x 198cm or 200cm x 198cm (Cabins 101 and 102)

Bathroom

Every cabin and stateroom on board is equipped with an en-suite shower (providing both hot and cold water) and a WC featuring a common water-flush system.)

Cabin Comforts

- Individual air conditioning system with climate control
- A safe deposit box
- Bathrobes, face and bath towels
- Hair dryer
- Intercom
- Television
- Body wash, Shampoo and Conditioner
- Bedding including pillows, duvet, and sheets. Extra pillows and light blankets are available on request
- Wardrobe organiser with ample hangers
- Desk with universal electrical points conveniently located for gadgets

En-suite Shower and Toilet

The cabin en-suite showers and toilets are thoughtfully designed to cater to the needs of modern-day users. While the size may vary depending on the cabin category, even the most compact cabins provide sufficient room, shelving, and space to accommodate your personal toiletries. All en-suite facilities are equipped with the following amenities:

- Manual bidet gun
- Separate shower
- Ample shelf/countertop and robe hooks

Housekeeping Practice

Cabins are cleaned daily. Sheets, bath and face towels are changed every 3 days of use. However, please feel free to request a change at any time when necessary.

SOLITUDE

UPPER DECK

Ocean View

Stateroom Cabins 301 and 302:

Twin or Double
Sharing

Maximum Number of Guests:

2 (two)

Mattress Size/s:

101cm x 202cm or
202cm x 204cm

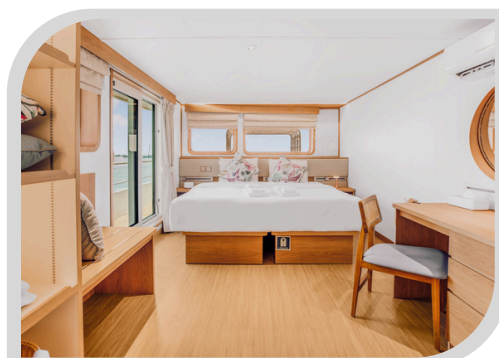
Cabin Size (including WC/Shower):

21.4sqm

Stateroom Single-Supplement: +60%



Stateroom Cabins' Sundeck



Ocean View

Cabin 303:

King Sharing

Maximum Number of Guests:

2 (two)

Mattress Size:

182cm x 202cm

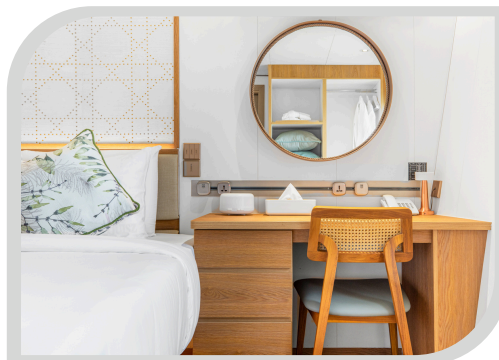
Cabin Size (including WC/Shower):

15.1sqm

Single-Supplement: +60%



Upper Deck Ensuite



G A I A

MAIN DECK



Ocean View

Cabins 203 to 204:

Twin or Double
Sharing

Maximum Number of Guests:

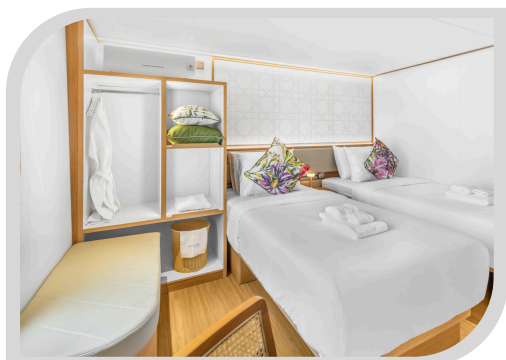
2 (two)

Mattress Size/s:

101cm x 202cm or
204cm x 202cm

Cabin Size (including WC/Shower): 16.3sqm

Single-Supplement: +60%



Ocean View

Cabins 201 to 202:

Double Sharing

Maximum Number of Guests:

2 (two)

Mattress Size/s:

198cm x 202cm

Cabin Size (including WC/Shower): 17.8sqm

Single-Supplement: +60%



Main Deck Ensuite

SOLITUDE

BELOW DECK



Interior

Cabins 101 and 102:

Twin or Double
Sharing

Maximum Number of Guests:

2 (two)

Mattress Size/s:

100cm x 198cm or
200cm x 198cm

Cabin Size (including WC/Shower):

24.6sqm

Single-Supplement: +60%



G A I A

THE HOSPITALITY

Entertainment onboard entertainment includes smart TVs installed in every cabin, lounge, and dining area. The lounge features a Bose audio system designed to elevate your viewing experience, complementing the 65-inch smart TV. Additionally, guests have access to cards and board games for their leisure and enjoyment.

Types of Coffee Available onboard there is a fully automatic (self-service) ground coffee machine, local and instant coffee.

Types of Tea Available onboard, we maintain a diverse selection that includes Chamomile, English Breakfast, Ginger, Green, and Chinese teas, subject to availability.

Drinking Water free flow from potable water dispenser with additional 4-stage filtration.

Alcoholic Beverages Available* beer, red/white/rose wine, and popular liquors, you may also BYO (at a reasonable amount - i.e. Philippines or Palau duty-free allowance) with no corkage charge. We do not allow any request to assist in personal purchases to stock alcoholic beverages as we conduct sales of alcoholic beverages on board.

Non-alcoholic Beverages are subject to availability, popular selections include light and zero options. Tonic and Soda water are also available.

Self Serve Snacks are available 24 hours.

Ice Maker available.

Special Dietary Requests with prior notice, we can cater to vegetarian and selective non-meat diets. However, for vegans, we kindly request advanced notice and a specific list of allowable ingredients for their meal preparation.

Souvenirs* Solitude Gaia apparel are still in progress, however, local souvenirs can be purchased when we take you to the local shopping mall.

Onboard Guest Services* satellite internet and laundry services are available.

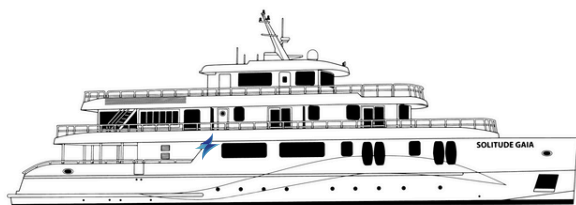
** are subject to additional costs*



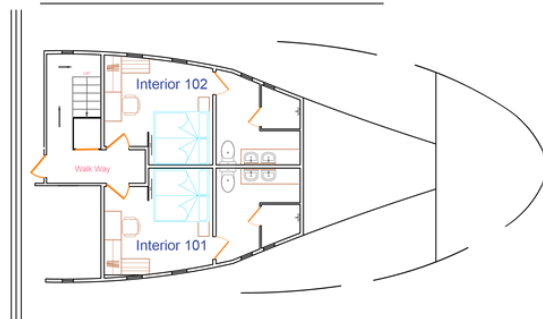
Bridge Sundeck

SOLITUDE

THE FLOOR PLANS

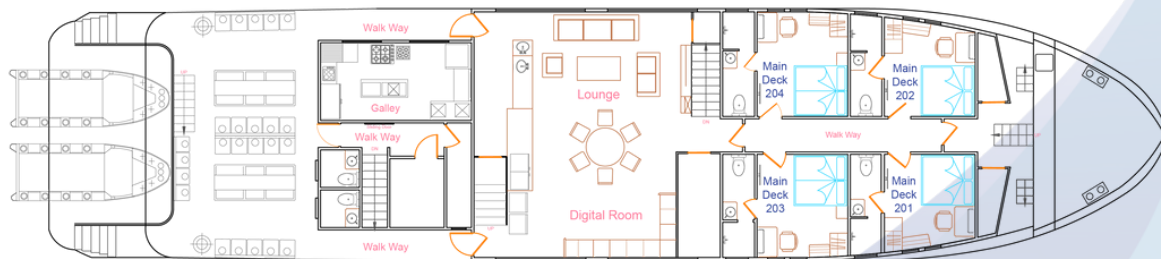


BELOW DECK INTERIOR CABINS LAYOUT



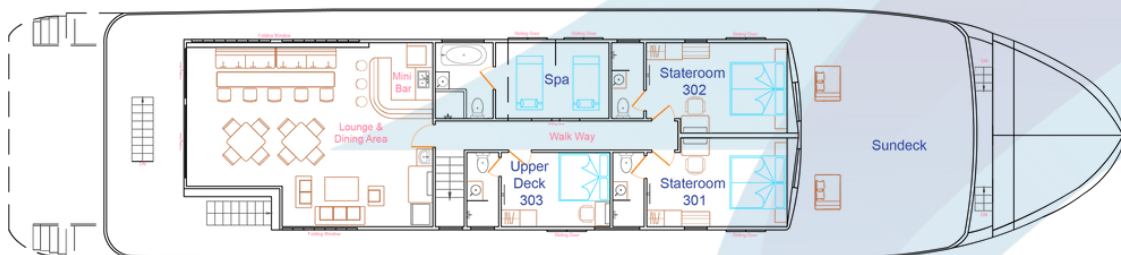
Interior Cabins 101 & 102 - Twin/Double Share

MAIN DECK CABIN LAYOUT



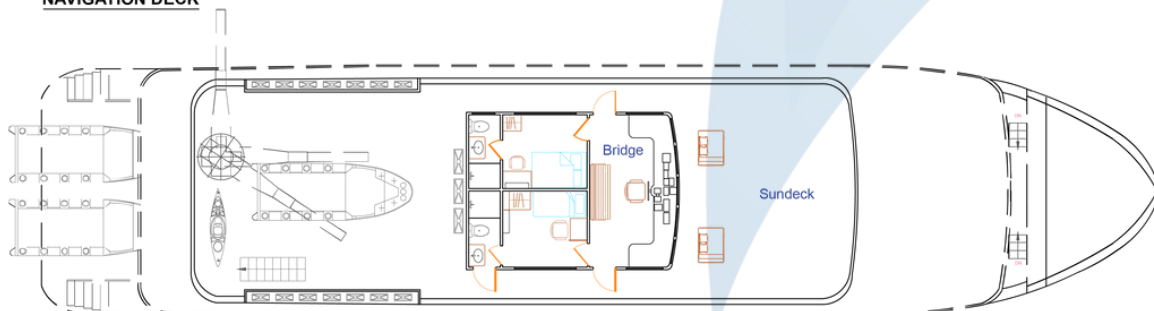
Main Deck Cabins 201 & 202 - Double Share
Main Deck Cabins 203 & 204 - Twin/Double Share

STATEROOM & UPPER DECK CABIN LAYOUT



Stateroom 301 & 302 - Twin/Double Share
Upper Deck 303 - Double Share

NAVIGATION DECK



SOLITUDE