

# SOLITUDE ONE

liveboards • Philippines



## DATA SHEET



# ABOUT

---

## INTRODUCTION

Originally a Japanese merchant vessel, Solitude One, the flagship of Solitude Liveaboards and Resorts, has undergone a transformation to redefine the standards of quality service and professionalism in the diving hospitality industry. And again, in mid-2023, it had an interior and cabin refresh, further enhancing the guests' experience and ensuring top-notch comfort during their stay.

## BACKGROUND

MV Solitude One was reconstructed in 2013 from a 171 ft (ca. 52 m) steel-hulled merchant vessel, undergoing a complete makeover to establish new benchmarks in hospitality and professionalism. Designed with our clients' preferences in mind, the vessel was purpose-built to combine smart design, functionality, and comforts reminiscent of home without excessive extravagance.

The company's interpretation of relaxed luxury begins with thoughtful design, creating purposeful and functional spaces for relaxation and recreation. Even the dive deck and boat deck spaces of the vessel can be easily reconfigured for major exploration expeditions using basic tools, all while ensuring exploration team members enjoy the modern comforts of home. Throughout their stay, every guest on board is attended to by well-trained staff who greet them by name, anticipate their individual needs, and discreetly appear whenever required, ensuring the guests' privacy and an exclusive 'home away from home' experience.

## THE RATES

Please refer to schedule availability information on [www.solitude.world](http://www.solitude.world) or [emailus@solitude.world](mailto:emailus@solitude.world) for cruise itineraries of Palau and the Philippines.

# SOLITUDE

# DESTINATION

---



- The Philippines, specifically Tubbataha, is available on a regular schedule.



# VESSEL FACTS

---

**Type and Year Built** the Steel Mono-Hull vessel has undergone a complete rebuilding process, although its original construction dates back to 1979.

**Port of Registry/Flagged** Batangas, Philippines.

**Cruising Itinerary Routes** The Philippines.

**Length** 52m (meters) **Beam** 8.6m **Draft** 5m **or Length** 171ft (feet) **Beam** 28ft **Draft** 16.4ft

**Cruising Speed** 8 Knots, top speed 12 Knots.

**Diesel Capacity** 150,000L (39,473 US Gal.).

**Cruising Range** is approximately 9000 nautical miles (16,668 km).

**Engine & Propulsion** main engine with 2698HP (2013kW) and auxiliary propulsion engine.

**Electricity** 1 x 250kVa, 2 x 125kVa, and 1 x 15kVa generators providing 24 hours of 200V to 240V - 50Hz power.

**Navigation** equipped with local navigation maps, Furuno GPS chart plotter, radar (long/short range), weather plotter, and depth sounder.

**Communication System** VHF/SB radios, VSAT satellite phone & internet, Inmarsat-C

**Ship Safety System** GMDSS with EPIRB, AIS, life rafts, emergency survival packs, and a semi-automated fire suppression sprinkler system.

**Fresh Water Capacity** 50,000L (storage) with an onboard water-maker capable of producing 7600L (2000 US gallons) of fresh water per day.



ONE

# THE DIVING

---

**Dive Skiffs** there are two purpose-built fibreglass boats measuring 11.5m (37ft) each, equipped with twin (or single) 200HP and twin (or single) 150HP 4-stroke outboard engines.

**Support Skiff** 1 x 8.3m (27ft) fibreglass monohull with single 60HP 4-stroke engine.

**Air Compressors** 3 x Bauer HP compressor IK120 with Bauer B-Kool 680-s air cooler filtered by P41 centralised system.

**Nitrox Membrane System** CompAir L07 Screw Compressors x 2 with Parker 608 nitrox membrane.

**Dive Guides** ratio 1 to 6 divers. Private guide service is available for USD150 per diving day (pdd).

**Dive Equipment Rental** is available, which includes dive computers, but underwater cameras are not included.

**Nautilus Lifeline MARINE Rescue** is complimentary Nautilus Lifeline Marine Rescue GPS. Please Note, that if you use the Device, you are responsible for replacing it if lost or damaged.

**Surface Marker Buoy (SMB), Lead Weights & Belt** are complimentary but responsible to replace if lost or damaged

**Enriched Air Nitrox** Diving EANx 30 to 32%, to provide a more suitable M.O.D for divers

**Scuba Cylinders** aluminium 100cuft (19units), 80cuft (79 units), 63cuft (4 units), 40cuft (6 units) and 19cuft (2 units) with DIN Valves (York Adaptors available). Twin tanks are not available, side-mount friendly.

**Rebreather Support** only on full charters with rebreather divers. Organising scrubbers requires advanced notice of 60 days or more, although there is no guarantee. Alternatively, you have the option to order and send them to us. It's important to note that oxygen supply can be both limited and costly.

**Medical Oxygen and Comprehensive First Aid Kits** are available

## FOR YOUR SAFETY

**NO SOLO** diving is allowed, even if you are certified.

It is mandatory for **ALL** guests engaging in scuba activities to have an audible signalling device (such as a whistle), a dive computer, a surface marker buoy, appropriate dive insurance coverage, a valid dive certification, and have completed waiver Form A and Form C for the activities.

# SOLITUDE

# DIGITAL ROOM

---

**Large Camera Rinsing Tanks** rinse tanks with air-gun and towels just for cameras.

**Pressurised Air** for drying is available.

**Camera Setup Bench on Dive Deck** is available.

**Universal Power Socket Type** is available.

**Power Type** 200V-220V/50Hz

**Surge Protection and UPS Sockets** is only in Digital Room.

**Electrical Plug Adapters and Extensions** are available.

**E6 Photo Processing** is not available.

## SOCIAL MEDIA

We encourage you to share your encounters with the fascinating new critters you'll undoubtedly encounter, as well as your enjoyable experiences with us. Feel free to follow, like and tag us on social media platforms:

### Instagram

[@mvsolitudeone](#)

[@solitude.world](#)

### Facebook

[@MVSolitudeOne](#)

[@solitudeliveaboardsandresorts](#)



# ONE

# THE CABINS

---

MV Solitude One features eleven (11) cabins, providing accommodation for a maximum capacity of 24 guests. Meticulously crafted with careful consideration, these cabins were conceptualised through a blend of experience, practicality, and feedback from guests, integrating essential elements from the hospitality world. The design process was driven by a deep understanding of the discerning divers' needs and desires, resulting in tastefully designed and practical living spaces.

Taller guests will find comfort in knowing that most guest areas offer adequate headroom. Additionally, every cabin category boasts mattresses with a length of 190cm (6.2ft), ensuring a restful experience for all guests.

## OVERVIEW

### 11 Cabins in Total

- **Main Deck | 3 cabins in total:** 3 Staterooms (1 x King Sharing, 1 x Twin Sharing and 1 Single/Double Sharing)
- **Below Deck | 8 cabins in total:** 1 Stateroom (King Sharing), 6 Deluxe Cabins (2 x Double Sharing, 3 x Twin Sharing, 1 x Single/Double Sharing) and 1 x Quad Sharing (4 x single beds)

### Mattress Sizes

- King Mattresses 180cm x 200cm (Cabins A1 and B6)
- Queen Mattresses 152cm x 190cm (Cabins B1 and B2)
- Full Double 140cm x 190cm (Cabins A3 and B4)
- Twin/Single Mattresses 90cm x 190cm (Cabins A2, B3, B5, B7 and B8)

### Bathroom

Every cabin and stateroom on board is equipped with an en-suite shower (providing both hot and cold water) and a WC featuring a common water-flush system.)

### Cabin Comforts

- Individual air conditioning system with climate control
- A safe deposit box, an additional box can be provided if sharing is not suitable
- Bathrobes
- Face and bath towels
- Hair dryer
- Reading lights
- Body wash and 2 in 1 Shampoo Conditioner
- Bedding including pillows, duvet, and sheets. Extra pillows and light blankets are available on request
- Wardrobe organiser with ample hangers
- Universal electrical points conveniently located for gadgets

### En-suite Shower and Toilet

The cabin en-suite showers and toilets are thoughtfully designed to cater to the needs of modern-day users. While the size may vary depending on the cabin category, even the most compact cabins provide sufficient room, shelving, and space to accommodate your personal toiletries. All en-suite facilities are equipped with the following amenities:

- Manual bidet gun
- Seated water closet (WC)
- Separate shower
- Ample shelf/counter top and robe hooks

### Housekeeping Practice

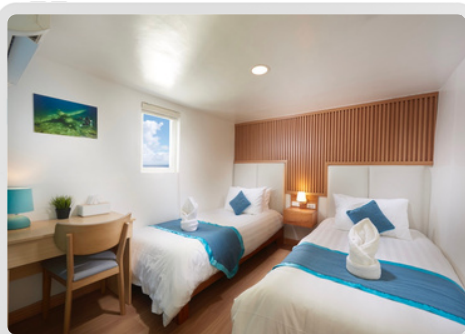
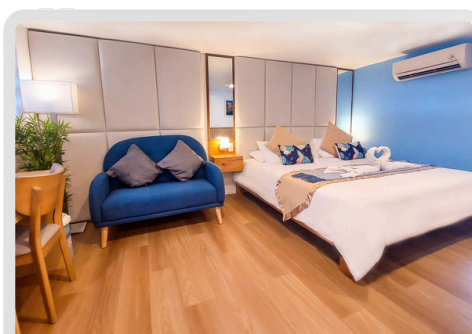
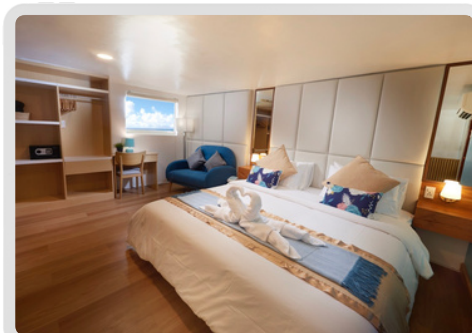
Cabins are cleaned daily. Sheets, bath and face towels are changed every 3 days of use. However, please feel free to request a change at any time when necessary.

# SOLITUDE

# MAIN DECK

**Stateroom Cabin A1:** King Sharing  
**Maximum Number of Guests:** 2 (two)  
**Mattress Size:** 180cm x 200cm  
**Cabin Size** (including WC/Shower): 18.5sqm

Stateroom Single-Supplement is +80% of the cruise schedule per diver rate.  
3rd person Sharing Diver or Non-Diver is -20% of the cruise schedule per diver rate.  
Non-Diver Rate is -10% of the cruise schedule per diver rate (+Single Supplement Surcharge if applicable).

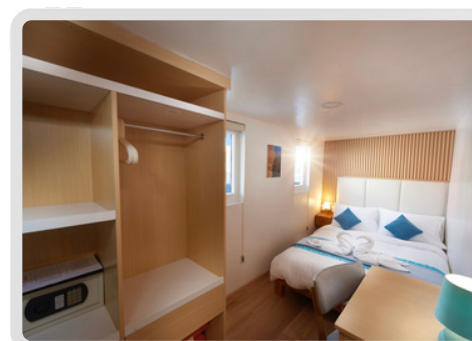


**Stateroom Cabin A2:** Twin Sharing  
**Maximum Number of Guests:** 2 (two)  
**Mattress Size:** 90cm x 190cm  
**Cabin Size** (including WC/Shower): 14.4sqm

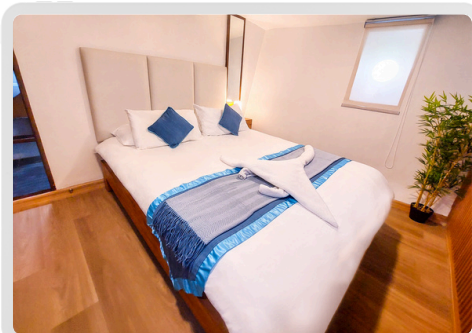
Stateroom Single-Supplement is +80% of the cruise schedule per diver rate.  
3rd person Sharing Diver or Non-Diver is -20% of the cruise schedule per diver rate.  
Non-Diver Rate is -10% of the cruise schedule per diver rate (+Single Supplement Surcharge if applicable).

**Stateroom Cabin A3:** Single/Petite  
Double Sharing  
**Maximum Number of Guests:** 2 (two)  
**Mattress Size:** 140cm x 190cm  
**Cabin Size** (including WC/Shower): 11.3sqm

Stateroom Single-Supplement is +30% of the cruise schedule per diver rate.  
Non-Diver Rate is -10% of the cruise schedule per diver rate (+Single Supplement Surcharge if applicable).



# BELOW DECK



**Deluxe Cabin B1 and B2:**  
**Maximum Number of Guests:**  
**Mattress Size:**  
**Cabin Size** (including WC/Shower):

Double Sharing  
2 (two) each cabin  
152cm x 190cm

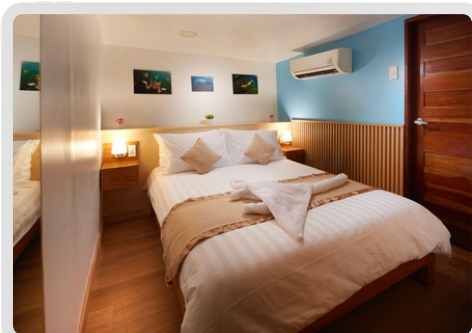
12.5sqm

Deluxe Single-Supplement is +80% of the cruise schedule rate.  
Non-Diver Rate is -10% of the cruise schedule per diver rate (+Single Supplement Surcharge if applicable).

**Deluxe Cabin B3, B5 and B7:**  
**Maximum Number of Guests:**  
**Mattress Size:**  
**Cabin Size** (including WC/Shower):

Twin Sharing  
2 (two)  
90cm x 190cm  
11.5sqm

Deluxe Single-Supplement is +80% of the cruise schedule rate.  
Non-Diver Rate is -10% of the cruise schedule per diver rate (+Single Supplement Surcharge if applicable).



**Deluxe Cabin B4:**

**Maximum Number of Guests:**  
**Mattress Size:**  
**Cabin Size** (including WC/Shower):

Single/ Petite  
Double Sharing  
2 (two)  
140cm x 190cm  
10.7sqm

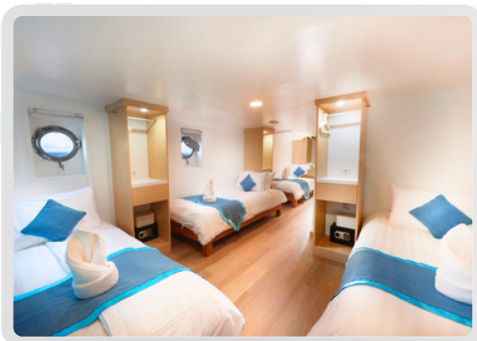
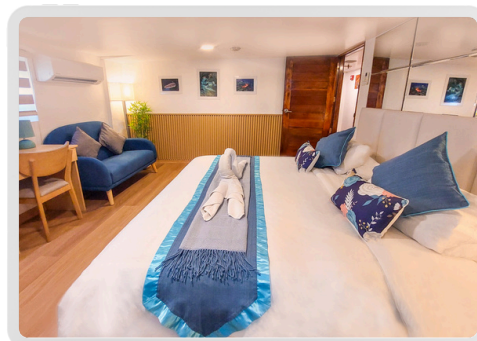
Deluxe Single-Supplement is +30% of the cruise schedule rate.  
Non-Diver Rate is -10% of the cruise schedule per diver rate (+Single Supplement Surcharge if applicable).

# SOLITUDE

# BELOW DECK

**Stateroom Cabin B6:** King Sharing  
**Maximum Number of Guests:** 2 (two)  
**Mattress Size:** 180cm x 200cm  
**Cabin Size** (including WC/Shower): 18sqm

Stateroom Single-Supplement is +80% of the cruise schedule per diver rate.  
3rd person Sharing Diver or Non-Diver is -20% of the cruise schedule per diver rate.  
Non-Diver Rate is -10% of the cruise schedule per diver rate (+Single Supplement Surcharge if applicable).



**Deluxe Quad Cabin B8:** Quad Share  
**Maximum Number of Guests:** 4 (four singles)  
**Mattress Size:** 90cm x 190cm  
**Cabin Size** (including WC/Shower): 24,6sqm

Single-Supplement is not allowed. The Triple Sharing option is +10% of the cruise schedule per diver rate. Twin-Sharing will be the same as the Master Stateroom Twin-Sharing cruise schedule rate. Triple, Twin nor Single is allowed for Tubbataha (Philippines) Cruise Itineraries. Non-Diver Rate is -10% of the cruise schedule per diver rate).

# THE HOSPITALITY

---

**Reading Library** with a loan & exchange program.

**Entertainment** onboard there is in the lounge a play-on-demand audio-video system with entertainment library, card and board games.

**Types of Coffee Available** onboard there is a fully automatic (self-service) pressed coffee machine, local and instant coffee.

**Types of Tea Available** onboard we stock Ceylon, Chamomile, Green and Chinese.

**Drinking Water** free flow from potable water dispenser with additional 4-stage filtration.

**Alcoholic Beverages Available\*** beer, red/white/rose wine, and popular liquors, you may also BYO (at a reasonable amount - i.e. your duty-free allowance) with no corkage charge. We do not allow any request to assist in personal purchase to stock alcoholic beverages as we conduct sales of alcoholic beverages on board.

**Non-alcoholic Beverages** subject to availability, popular selections include light and zero options.

**Self Serve Snacks** are available 24 hours.

**Ice Maker** available.

**Special Dietary Requests** with prior notice, we can cater to vegetarian and selective non-meat diets. However, for vegans, we kindly request advanced notice and a specific list of allowable ingredients for their meal preparation.

**Souvenirs\*** Solitude One apparel are still in progress, however, local souvenirs can be purchased when we take you to the local shopping mall.

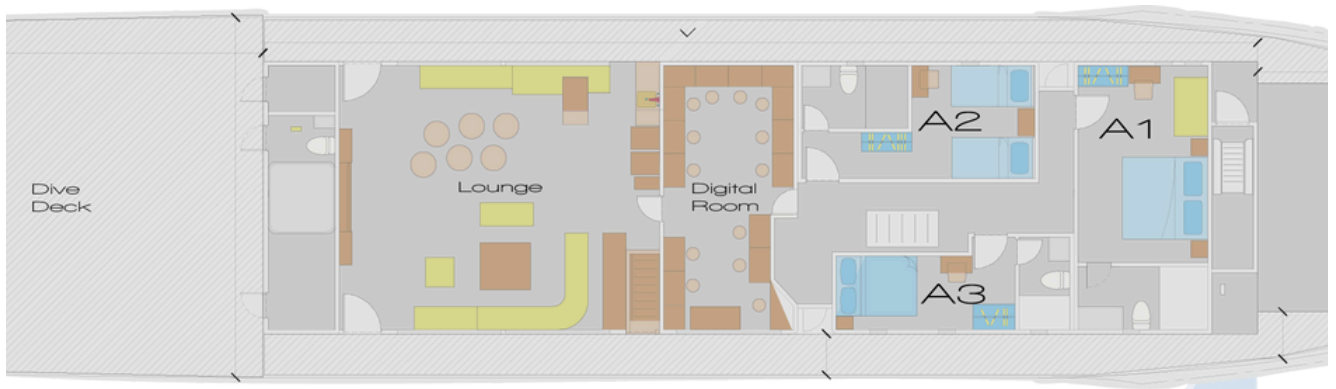
**Onboard Guest Services\*** satellite internet and laundry services are available.

*\* are subject to additional costs*

# SOLITUDE

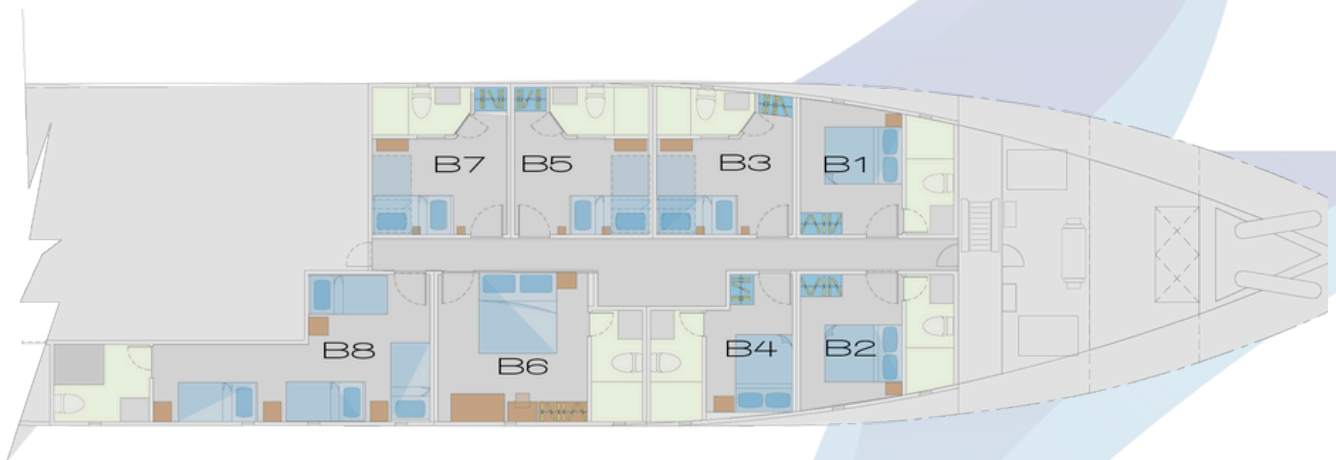
# THE FLOOR PLANS

## A DECK / Main Deck



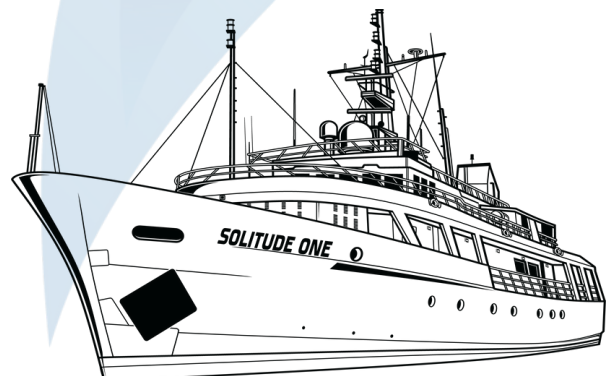
**Staterooms** A1, A2, A3, B6: 2 x King-Sharing, 1 Twin Sharing, 1 x Single/Double-Sharing

## B DECK / Below Deck



**Deluxe Cabins** B1, B2, B3, B4, B5, B7: 2 x Double-Sharing and 3 x Twin-Share, Bunk Bed style, 1 x Single/Double Sharing

**Quad Cabin B8** 4 x Single Beds



# SOLITUDE