

# LEMBEH

# CONTENTS

DEAR GUESTS	5
SOLITUDE LEMBEH RESORT	6
THE RESORT	8
SAFETY	11
ABOUT THE ROOMS	12
MASSAGES	15
TEMBAGA RESTAURANT & BAR	16
PHOTOGRAPHY	18
OUR PHOTO PRO	20
WORKSHOPS	22
THE DIVE SITES	26
SAFE DIVING	28
DIVE SHOP	30
DIVE TRIPS	32
Explore Minahasa	38
Beach Hopping	46
Bitung Fish Market	48
SOLITUDE WORLD	50
CONNECT WITH US & KEEP IN TOUCH	55
RETURNING GUEST PRIVILEGES	56
SOLITUDE SOCIALS	58





## Contact Us

+62 812 446 6666

+62 812 446 6666

[emailus@solitude.world](mailto:emailus@solitude.world)



## Climate

Tropical Climate with an annual mean temperature of 28°C (82°F). Rain is frequent between the months of December to February.



## Water Temperature

Ocean temperatures in Indonesia range from 27°C to 29°C (81°F - 84°F) with thermoclines.



## Time Zone

Time Zone: GMT +8



## Language

The official language is **Indonesian** in Indonesia, but English is also spoken at Solitude Lembeh Resort.

# DEAR GUESTS

**Welcome to Solitude Lembeh Resort!**

**We are delighted that you are spending your holidays with us. On behalf of the entire team at Solitude Lembeh Resort and Solitude World, we would like to extend a very warm welcome to you and trust that your stay with us will be enjoyable and comfortable.**

**Please don't hesitate to let us know if there is anything we can do to enhance your comfort during your stay, as our staff is dedicated to providing assistance and support to ensure your satisfaction.**

**We wish you a pleasant stay.**

*Anna & Patrick*



## Currency

The currency is Indonesian Rupiah (IDR). Solitude Lembeh Resort only accepts IDR cash and credit card (Visa/Master Only). We do not accept any travellers' cheques. We are unable to provide currency exchange.



## WiFi

Free WiFi is available at the resort, but Solitude Lembeh Resort is not responsible for any loss of income, data, or information due to connectivity issues caused by weather or third-party service providers.



## Electricity

Our resort adheres to the EU standard of a single-phase, 220-volt AC system. All power sockets in the rooms and throughout the resort operate at 220V 50Hz. Currently, except for the Camera Room facility we do not have a regulated Uninterrupted Power Supply (UPS).



## Duty Free

1 Adult is allowed: maximum of 2.25 litres, 200 cigarettes or 1 carton of cigarettes, 25 cigars and for tobacco, it's 700 grams or 3.52 ounces.



# SOLITUDE LEMBEH RESORT

Critter haven of the globe.

Lembeh Strait, one of the most famous dive destinations in the world, is an absolute must for divers venturing to Indonesia.

Lembeh has become world renowned for its plethora and diversity of critters with many found only in the local area such as the Hairy Octopus or Lembeh Sea Dragon.

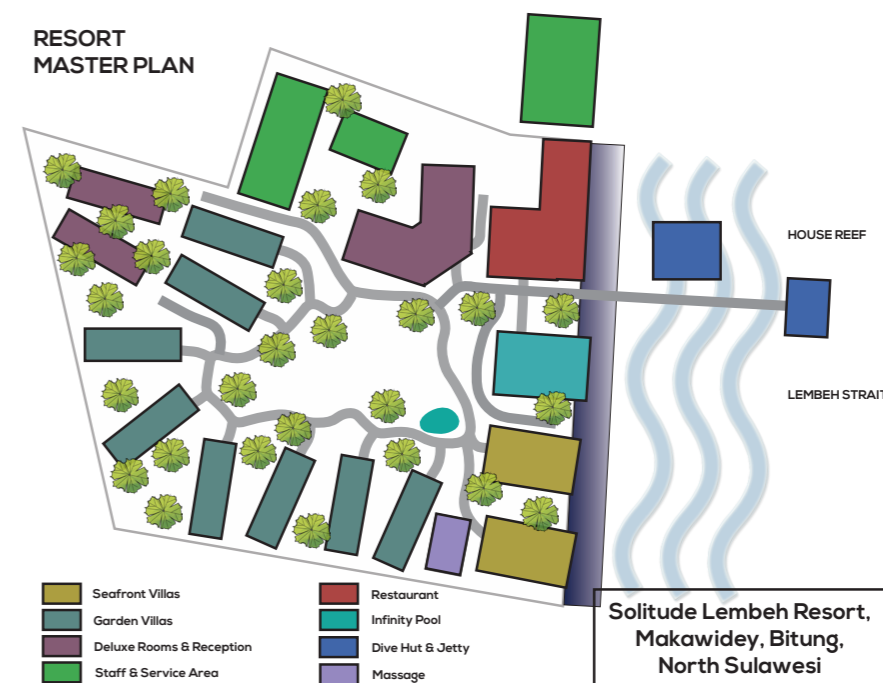
Divers can expect mild currents, low surge and shallow sites, making the area suitable for divers of all experience levels from a

beginner to the veteran photographer. The water temperature varies depending on the time of the year, with the lowest being in July and August when the temperature drops to around 25°-26° degrees Celsius or 79°- 81° Fahrenheit. Please refer to page 8 for our Water Temperature Guide. To ensure your comfort we recommend that you bring a 3mm with a vest or a 5mm wetsuit, especially if you are planning on doing several long

dives a day. We have additional layers for rent if you find you need more warmth.

Our primary focus is on macro and critters, so visibility is not typically a major concern for us. Nevertheless, it is worth noting that we

occasionally encounter excellent visibility of up to 40 meters on the East of Lembeh, while inside the strait, the average visibility is around 10 meters.



# THE RESORT

## An overview

Upon your arrival at our resort, our staff will provide you with a warm welcome. We will give a resort induction and tour, when suitable. Additionally, our staff will accompany you to your rooms, allowing you to unwind and begin enjoying your holiday.

### Being environmentally conscious

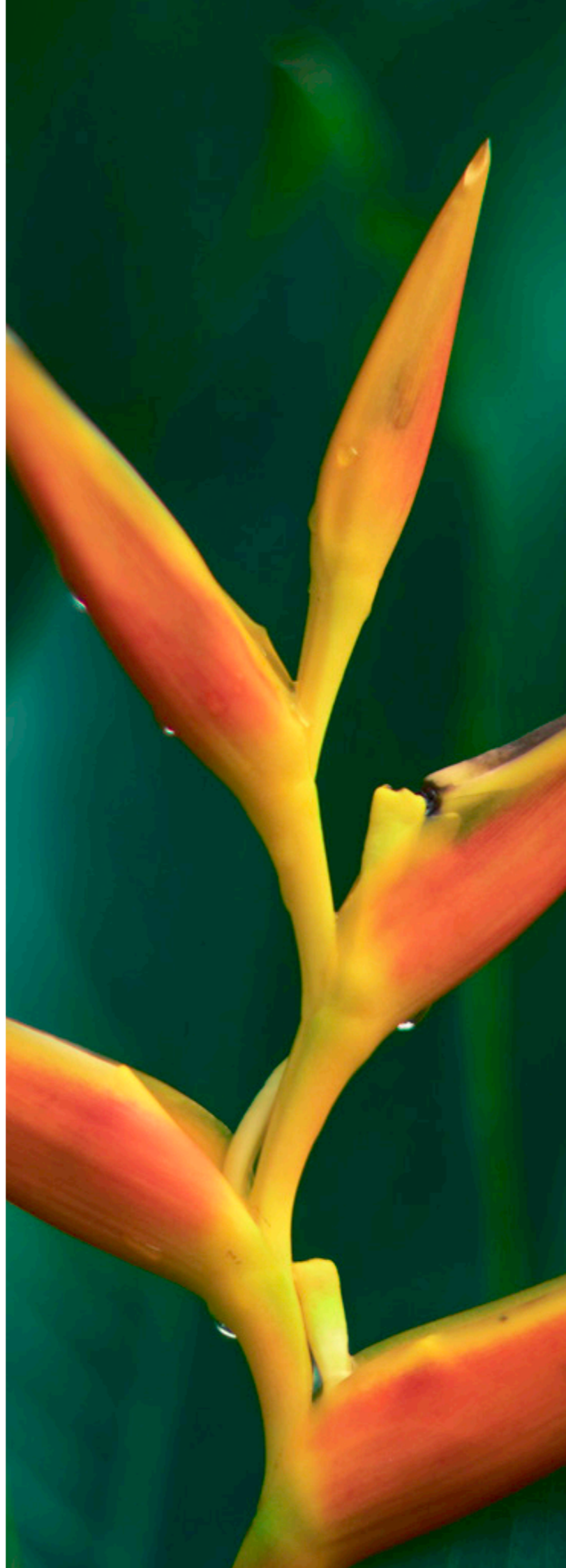
As an environmentally conscious company, we are not only responsible for reducing our impact on the environment, but it is also an essential part of our ethos. Additionally, we are a member of [Green Fins](#), a public-private initiative of the United Nations Environment Programme and Reef-World, which provides the only internationally recognized code of conduct for reducing the environmental impacts of the diving and snorkeling industry.

### Special Diets

Please kindly notify us in advance of any specific dietary requirements you may have, such as a need for a gluten-free or dairy-free diet. This information is crucial for us to ensure we can accommodate your needs and source appropriate items accordingly.

### The Tembaga Restaurant and Bar

At The Tembaga Restaurant and Bar, we present a delectable assortment of local and international dishes, accompanied by a thought-



fully chosen array of wines, cocktails, spirits, and local beer. Patrons are welcome to bring their own alcoholic beverages to be enjoyed within the resort's premises.

### Laundry Services

Laundry service is available. You will discover a laundry bag containing a list of items and associated charges within your room.

### Baby Sitting

We can make arrangements for a babysitter, depending on availability. To confirm rates and availability, kindly inform us at least one week prior to your arrival.

### Mobile SIM

Pre-paid SIM cards, including Globe, are available for purchase in Manado City. The salespeople can assist with package setup.

### WiFi

Solitude Lembeh Resort offers free internet access to our guests through our WiFi network hotspot. Guests will receive their login details upon check-in to access the internet.

However, please note that the quality of the internet connection may be affected by weather and is dependent on a third-party service provider. Therefore, Solitude Lembeh Resort, its staff, and management cannot be held responsible for any inconveniences, loss of income, or data that may occur due to any disruptions, partial or complete, in the internet service.

### Massage

We provide the opportunity to indulge in a traditional Indonesian massage. Simply inform any of our staff members about your desired time, and we will make the necessary arrangements for you.

### Camera Room

Our Camera Room is equipped with air conditioning, moisture filters, and spacious powered workstations with universal power points (220 V) for your convenience.

Additionally, fresh water rinse basins are available

at the Dive Hut and air guns can be found at the entrance to the camera room for cleaning and drying your equipment.

### Activities

Yes! We offer a diverse range of activities for you to choose from for your non diving days. These include full-day excursions with knowledgeable local guides to the Minahasa Highlands and Tangkoko National Park, where you can witness the rare crested black macaque, hornbills, and the world's smallest primate, the Tarsius spectrum. Additionally, we offer a 3-hour trip to the local fish market and Bitung town, as well as the option to arrange trekking and rafting trips upon request.

### Social Media

We encourage you to share your encounters with the fascinating new critters you'll undoubtedly encounter, as well as your enjoyable experiences with us. Feel free to tag us on social media platforms:

#### Instagram:

[@solitudelembeh](#)

[@solitude.world](#)

#### Facebook:

[@solitudelembehresort](#)

[@solitudeliveboardsandresorts](#)

### Gratuities / Tips

Throughout your stay, our dedicated staff and crew are fully committed to ensuring you have a fantastic Solitude experience, and while gratuities are not expected, they are sincerely appreciated. They recognise the collective teamwork, even from those working behind the scenes, and distribute all tips equally. Should you wish to show your appreciation, a recommended gratuity of 5% to 10% of the total stay cost is suggested. Of course, if you wish to express your appreciation with a higher amount, you are more than welcome to do so.



# SAFETY

**SAFETY** is Solitude's top priority, we take every precaution to ensure the safety of our guests and crew. As we operate in remote areas we ensure that we are well-equipped to handle any emergency scenario.

## **Fire**

Please make yourself familiar with the location and instructions of our fire extinguisher in your room. Our smoke detectors and extinguishers are inspected at regular intervals.

## **Earthquake and Tsunami**

This region may experience mild earthquakes that can feel like a passing truck. The most recent slightly stronger quake was in 2005 and caused some wall cracks, but no one was harmed. Our resort is connected to a warning system that alerts us in the event of a volcano eruption, earthquake, or tsunami.

If an EMERGENCY EVACUATION is required an alarm will be raised and, please follow our staff instructions and you will be lead up to a safer location.

## **Diving**

During your stay we offer our guests with a complimentary Nautilus Marine Rescue GPS to provide that peace of mind.

# ABOUT THE ROOMS

Indulge in the comforts of your room, as your comfort is our top priority.

## Room Service

Kindly note that we do not provide room service as it may attract unwanted animals once the food is opened.

We kindly request that you store your consumables in a closed container or in the fridge to prevent any issues.

## Toilets

To assist with your personal hygiene, your toilet is furnished with a bidet gun. If you are not accustomed to using this type of equipment, simply use the spray function to clean the relevant area after using the toilet.

## Mosquitos

Each evening, our staff will provide a mosquito coil and light it on your terrace to keep the mosquitoes away. To prevent mosquitoes from entering your room, we recommend keeping windows and doors closed once the lights are on.

Although we regularly fumigate the entire resort, it is challenging to completely eradicate mosquitoes in such a climate. If you require further assistance, we have electric mosquito solutions available for installation in your room upon request. Don't hesitate to ask us for help.

## Cats

PLEASE DON'T FEED THE CATS!

Rest assured that our cats Scuba & Lilly are well fed with healthy cat food and plenty of treats, even though you may find them relaxing around the dining area.

Occasionally, they may wander into the restaurant, but they have been trained not to beg for human leftovers.

Please do your part in assisting us in this matter and do not feed them. As not all guests are fond of cats, upon request, we can confine them to a room even though they enjoy roaming around our resort.

## In Your Room

All our rooms are fully furnished with air conditioning.

For your additional comfort, you will also find complimentary:

- Internet access
- Universal power points
- Personal toiletries, soaps, shampoos and conditioners
- Amenities such as a fridge, coffee pot, towels, hair dryer and safe



- Afternoon turn-down service and daily housekeeping.

## Being Eco-Conscious

As an eco-conscious establishment and an approved member of [Green Fins](#), reducing our impact on the environment is not only a responsibility, but it is also a fundamental part of our ethos.

## Reusable Water Bottles

In your room, you will discover a water gallon accompanied by reusable water bottles for your convenience during your stay. You are welcome to utilise them throughout your visit and even take them home with you. If you require a refill, simply approach the staff, who will gladly assist you by replenishing it.

## Towels

In an effort to be environmentally conscious and to support local water supplies, we kindly ask that we replace your towels every third day during your stay. If you require a towel replacement sooner, please leave it on the bathroom floor.

## SAFE

### Programming the user code

1. Open the door and press reset button once, the display shows "-----"
  2. Input 4-6 digits code and press "#" to confirm. The display shows "INTO", which means the setting is accepted.
- So now you can use your safe box with a new password.

### Opening the Safe Deposit Box

1. Press key "#"
2. Input your 4-6 digits password within 6 seconds and press "#" to confirm.
3. Rotate the knob (master key) clockwise to open the door.

### Closing the Safe Deposit Box

Rotate the knob counter-clockwise to the initial position.

For any further assistance or help in using the safe, please contact the reception desk.



# MASSAGES

Pamper yourself and unwind with a soothing massage that will indulge your senses and melt away stress.

## Traditional Indonesian Massage

During your massage, the masseuse will use a combination of pressure techniques to soothe your muscles and work out any knots or areas of tension. If you prefer a lighter touch or have any concerns, don't hesitate to communicate with the masseuse, and they will adjust the pressure to your liking. Our goal is for you to feel completely relaxed and rejuvenated by the end of your session.

An Indonesian massage is a comprehensive, holistic treatment that involves full-body, deep-tissue massage. This therapy combines various techniques, such as acupressure, reflexology, gentle stretches, and aromatherapy, to enhance blood and oxygen circulation and promote the flow of energy throughout your body. As a result, you will experience a sense of calmness, deep relaxation, and overall well-being.

The treatment involves skin rolling, kneading,

stroking, and pressure-point stimulation, and it incorporates essential oils that provide a soothing and therapeutic aroma. If you are seeking a massage that offers a variety of techniques, need help relaxing, or feel a bit low, then an Indonesian massage is an ideal choice. This relaxation massage not only calms your mind but also boosts your circulation and targets knotted tissue to address any physical issues you may have.

Aromatherapy is a crucial aspect of an Indonesian massage, with scented massage oils being highly therapeutic. The essential oils used in this type of massage, such as frangipani essential oil, which is known for its mood-boosting properties, are rare and can only be found in Bali or Indonesia. The massage oil also helps to make massage strokes more fluid and free of friction, resulting in a more comfortable treatment.

## MASSAGE MENU





# TEMBAGA RESTAURANT & BAR

Embark on a tantalizing treat of the senses as you savour the bold and exotic flavours of the local cuisine, discovering a world of new tastes that will leave you endlessly intrigued.

Conveniently located by the pool, the Tembaga Restaurant and Bar is a culinary destination that caters to both local and international palates.

From 7 am until midnight, our skilled chefs showcase their expertise through a diverse menu. We happily will try to accommodate any special requests and dietary requirements, so please inform us in advance for a delightful dining experience tailored to your needs.

The bar boasts a well-curated selection of beverages, including beer, wine, cocktails, soft drinks, and refreshing juices.

Please note that while we offer a delightful dining experience, room service is not available.

**MENU**



# PHOTOGRAPHY

Our Camera Room can cater for all your electronic needs.

Lembeh, a true haven for photographers, offers a mesmerizing array of rare and unique marine life waiting to be captured through your lens. Our well-equipped camera room, conveniently located near the restaurant, features air conditioning, moisture filters, and spacious workstations with universal power points (220 V). For your convenience, fresh

water rinse basins can be found at the Dive Hut, while air guns await at the camera room entrance, ready to assist in cleaning and drying your equipment. Our highly skilled dive guides, renowned for their ability to spot camouflaged critters, will enhance your photography experience. We maintain a two photographer per guide ratio, en-

suring ample time for everyone to capture remarkable sightings. To foster a considerate environment, we encourage the "10 images and swap" philosophy, promoting collaboration and respect for your dive buddy. Rest

assured, our attentive boat crew, dedicated dive centre staff, and experienced guides are well-versed in the needs of underwater photographers, handling your valuable equipment with utmost care and expertise.



# OUR PHOTO PRO

## Patrick Neumann

German professional underwater photographer in-house. Patrick is delighted to share his knowledge, tricks and tips.

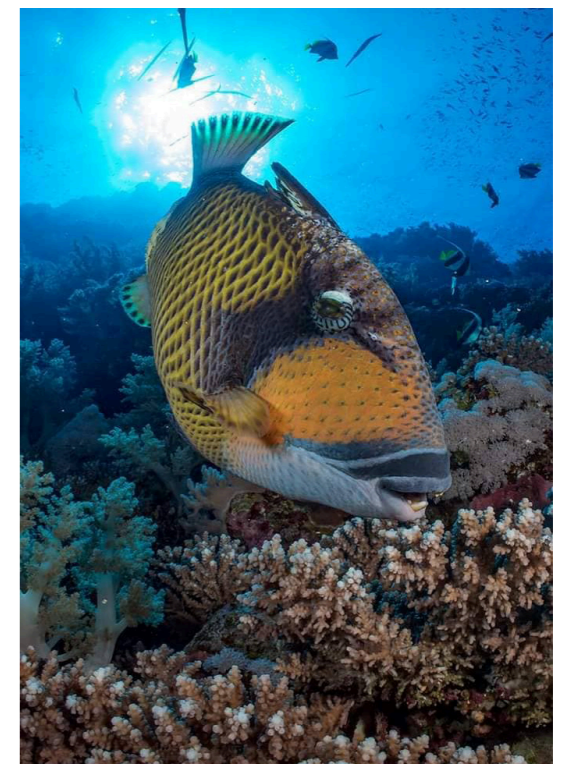
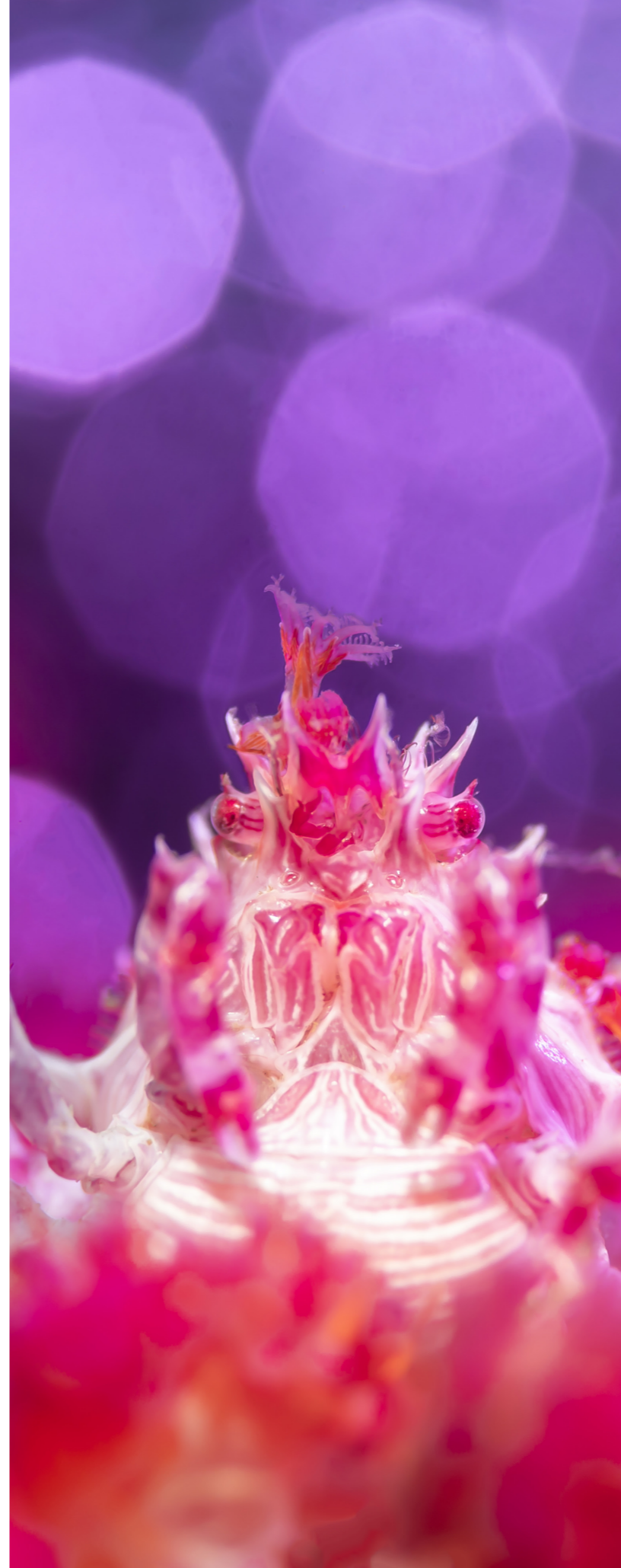
At our resort, we have a special focus on Underwater Photography, which is evident in our choice of Patrick Neumann as not only the Resort Manager but also our Photo Pro.

It is also part of our ethos to provide support for our guests' photography needs. Patrick has been diving since the young age of 7 with his father, who is still an active Dive Instructor.

After working various jobs as a dive professional, he discovered a new passion for underwater photography in 2006. His success in prestigious competitions, such as the Epson Red Sea Shootout, The Underwater Photographer of the Year, and Our World Underwater, quickly followed.

He even sold his car to upgrade his camera equipment. He has been published in numerous magazines, including National Geographic, and has ongoing articles in TAUCHEN.

As a Nauticam ambassador, he now shoots with a Canon 5DMKIV, but he also has extensive knowledge of other systems, gained through his experience as an advisor for the biggest UW photo equipment specialist in Germany. If you need any assistance or private lessons, Patrick will be delighted to share his knowledge, tricks and tips with you.



**Bubble Bokeh and Back lighting are some of tricks and tools you can use to enhance a subject to your liking.**

**Having not just one element but many, like here with the sun in the background gives dimension to your subject.**

# WORKSHOPS

International Photographers

**Coconut Octopus**  
Lilian Koh



## International Photography Workshops

Learn more about underwater photography

Get the chance to enhance your underwater photography skills by joining our in-house photo pro or attending workshops led by visiting underwater photographers like William Tan, Tobias Friedrich and Lilian Koh, who are all award-winning photographers representing their countries' best.

You can easily find all the information and workshop details, including a photographer's biography, from our homepage or by contacting us directly. Based on your interests, you can choose which workshop you want to attend, as well as which photographer's style suits you the best.

Workshops will mainly be conducted in the photographer's native language, but English may also be used if requested by the guests.

Attending a workshop is an excellent opportunity to meet other photographers and discuss techniques and tips without boring non-photographer companions.



# THE DIVING

## Water Temperature

November to March 28°-29° C or 82°-84° F  
April to October 25°-26° C or 79°- 81° F.

## Rental Equipment

We also offer rental equipment. Please refer to [page 30](#) for further information.

## Our Diving Schedule

The dive duration is set to 60 minutes with surface intervals conducted back at the resort. The boat ride to each dive site takes approximately 5 to 12 min.

## Daily Dive Times

07:30 / 10:30 / 14:30

## Specialty Dives on Request

Mandarin Dive:	17:00
Night Dive:	18:00
BlackWater:	18:30

## In the Water

As you explore the underwater world, please be cautious and considerate, to both the animals that you encounter and your fellow divers.

We prioritise responsible diving practices at our resort, which means respecting critter etiquette by not touching or relocating them. Our expert Dive Guides can help identify and locate them while maintaining a respectful interaction.

It's important to preserve the environment and the animals' habitats, so please practice good buoyancy and avoid stirring up the mud or sand.

Our goal is to create an unforgettable experience for all, so please be respectful to both your fellow divers and the underwater world.

## Snorkelling

The Lembeh Strait boasts a lesser-known snorkelling area in the shallower parts of our dive sites, where you can spot some of the rare species found by divers.

This area is also accessible for non-diving companions who can enjoy being on the boat with you during your dive excursion.



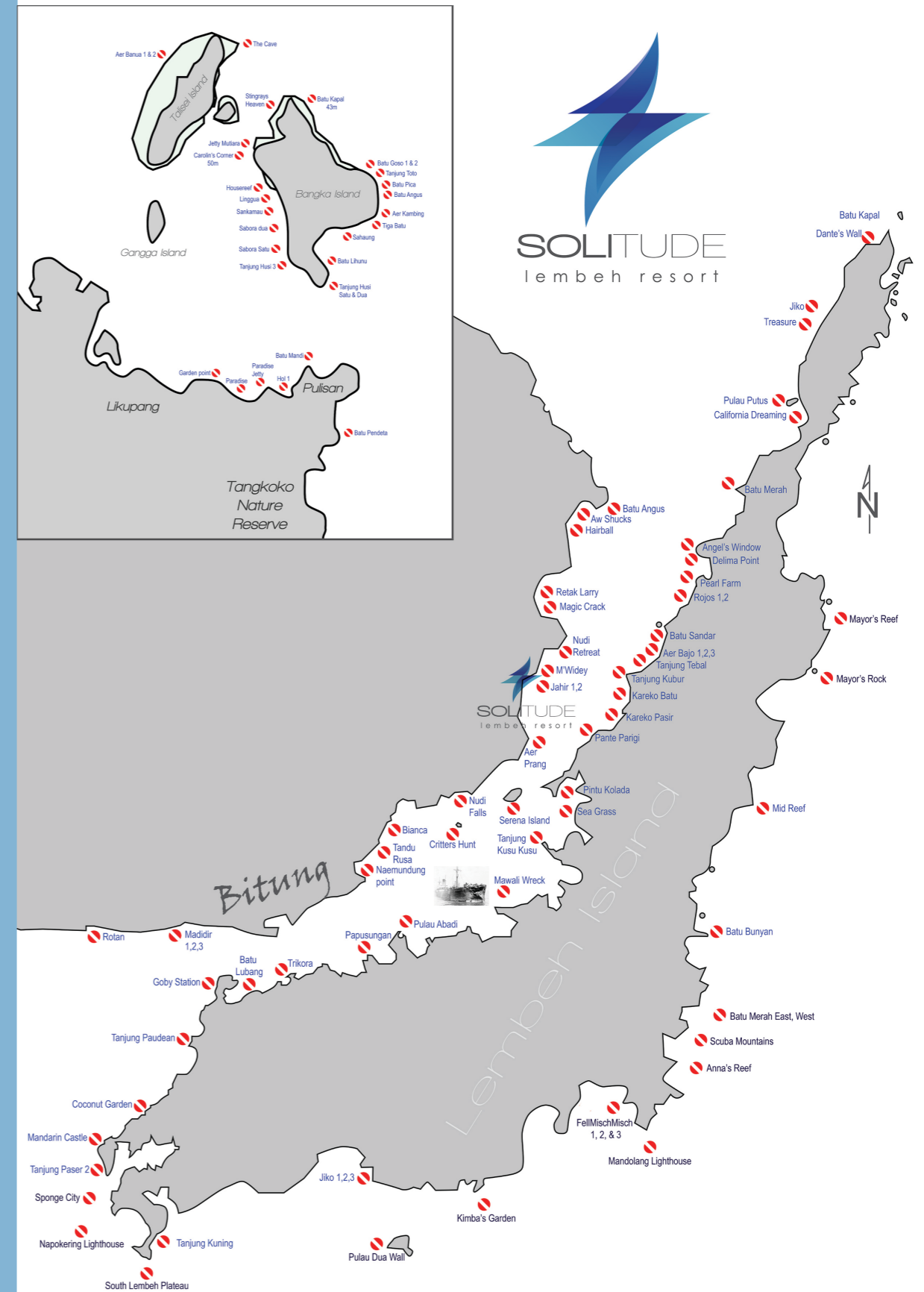
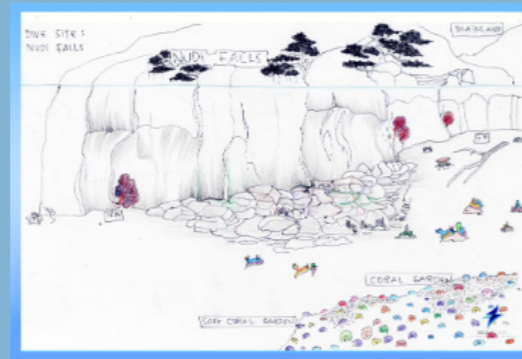
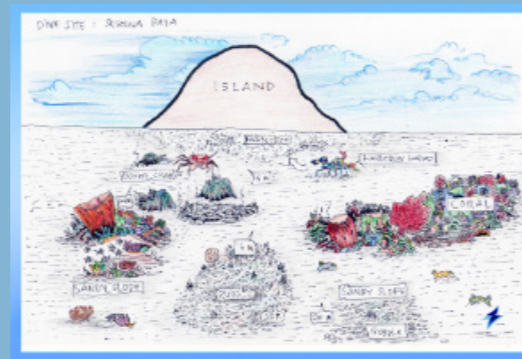
Byron Conroy

# THE DIVE SITES

Lembeh Strait boasts around 70 dive sites, and every year more are discovered and given names, providing an extensive range of habitats and dwellings for critters. Our guides continuously document and examine these changes to keep themselves up-to-date with the critters' whereabouts, but it is essential to note that nature has its own secrets, and success is never guaranteed.

Before every dive, there will be a briefing from one of our Dive Guides either in our Dive Hut or directly at the dive site on your boat.

If you have a specific interest in certain animals or have a photograph in mind, please inform your guide, and they will do their best to accommodate your request. However, it's recommended remaining open-minded, as you may have come across critters that you have never encountered before.



# SAFE DIVING

We aim to provide you with as many dives as possible while ensuring your safety.

## Our Dive Safety Precautions

Ensuring your safety is our top priority during your stay with us. Our dive guides receive thorough training in dive planning and safety protocols, and we equip our boats with essential safety gear, including a First Aid Kit, Medical Oxygen, and a breathing apparatus. Our staff members have also received emergency first responder training, so you can feel confident in their abilities in case of an emergency.

We also provide complimentary access to the Nautilus Marine Rescue Device GPS for our guests to use, which we recommend for reef dives outside the primary straits. In the unlikely event that you need to use the decompression chamber in Bitung, it's easily accessible within a 15-minute journey from anywhere in the strait.

Our Nitrox and Air tanks are up to international standards, and we conduct hydro inspections every five years to ensure their safety. To prevent any pollutants from contaminating our fill station and compressors, they are designed with isolation in mind.

Please note that if you use the Nautilus Rescue Device, you are responsible for replacing it if lost.

## General Procedures

- Never dive without a buddy.
- Never dive if you have a cold or congestion.
- Always plan your dive and dive your plan.
- Check your equipment, use the appropriate equipment.
- Avoid consuming alcohol and or any drugs that may impair judgment or cause drowsi-

# 30%

## Enriched Air Nitrox

For safety reasons, we typically provide EAN mixes of around 30% to 31%, which allows for a safer Maximum Operating Depth and ample bottom time. Our all-inclusive diving package can include EAN use, proof of EAN certification is required without exceptions.

## Dive Shop

Although our dive shop has limited retail space, we do offer rental equipment to accommodate your needs. To ensure a smooth experience, we kindly request advanced notice if you require rental gear. In the event that you encounter the need for repair or spare parts, we will make every effort to assist you to the best of our ability. Please note that the cost of any required parts will be assessed on a case-by-case basis. It is highly recommended that you have your own gear serviced and thoroughly checked prior to your arrival for optimal diving conditions.

Prior to diving, it is mandatory to present proof of certification and insurance.

- Ask your doctor about what medication is safe to use when diving.
- Consult with your doctor how diving can affect your health, especially if you have pre-existing health conditions.
- Learn about the underwater area and its dangers. Learn which fish, coral, and other hazards you should avoid to prevent injury.

ness before diving. information will help you avoid decompression sickness.

- Never hold your breath while ascending. Your ascent should be slow and your breathing should be normal.
- Don't panic underwater. If you become confused or afraid during a dive, stop, try to relax, and think through the problem. Ask for help from your dive buddy or dive guide.

If you don't feel well or if you are in pain after diving, inform us and we will take you to the nearest emergency room right away.

Do not fly for 24 hours after a no-decompression dive.

- Be aware of local tides and currents.
- Follow all diving instructions. As you descend, make sure you equalise your ears and mask early and often. At depth, stay inside the parameters of the dive tables and computer. This

## Dive Center

1	EANitrox	Yes
2	Specialty Dives - blackwater, wide angle, night dives	Yes*
3	Side mount support - additional 12L/80cu.ft. cylinder and twin tank 12L/80cu.ft. available. Air USD10, additional EANitrox USD8 pcpdd. Whole trip use: 10% discount applies	Yes*
4	DIN valves with option of Yoke (A-clamp)	Yes
5	Rebreather	No
6	Rental gear available	Yes*
7	Private Guide Service is available.	Yes*

\* Subject to availability/change, please check price guide.

# DIVE SHOP

## Price Guide

Equipment	Rate per day	Breakage / Replacement Charge
Complete Set of Diving Equipment	570,000	
BCD	135,000	5,400,000
BCD + Regulator Set	275,000	-
Dive Computer	165,000	5,000,000
Dive Weight	Complimentary	55,000 per kilo
Dive Weight Belt	Complimentary	500,000
Diving Fins	90,000	2,000,000
Diving Fin Strap with Buckle	-	400,000
Diving Torch	90,000	1,350,000
Mask & Snorkel	90,000	1,350,000
Mouth Piece		70,000
Regulator (Octopus / Console)	135,000	6,100,000
Snorkel Set	105,000	
Surface Marker Buoy	Complimentary	70,000
Wetsuit (long)	135,000	

Diving	IDR Rate per day
Blackwater surcharge	440,000 min 2 persons
EAN surcharge per dive	150,000
EAN surcharge per day (3 dives)	375,000
Dawn, Dusk or Night Dive surcharge	300,000 min 2 persons
Private Guide or Snorkel Guide	375,000 per dive or 1,000,000 per day

## Toko Berharga

### GIFTS & ITEMS YOU MIGHT NEED

At our Toko Berharga, which means "Precious Shop," we showcase an array of Solitude Lembeh merchandise and exquisitely crafted local products. These unique keepsakes are constantly evolving, ensuring a delightful surprise with each visit. Discover the charm of our ever-changing collection and select a precious souvenir to commemorate your journey. We warmly invite you to explore the treasures awaiting you at our shop.

Please note that all equipment are subject to availability and prices listed in IDR and inclusive of VAT/PPN as of 03/2024.



Solitude Lembeh Souvenirs		Price
Cap	Baseball Cap	180,000
	Fisherman Hat	180,000
Dry Bag	grey 5 litre	200,000
	blue 10 litre	275,000
Pointing Stick	blue	120,000
Sunscreen	KANNI reef safe SPF50	350,000
Solitude Lembeh Tees	white	180,000
	blue	250,000
	gray	250,000



# DIVE TRIPS

Explore untouched sites with breathtaking deep blue vistas.

We specialise in diving adventures in the Lembeh Strait, where our primary objective is to discover the extraordinary critters inhabiting the black sandy slopes, making it a haven for unique marine life found nowhere else in the world. For those seeking a wider perspective, we also offer opportunities to explore untouched sites with breathtaking deep blue vistas. Our dive day trips cater to divers of all skill levels.

These trips do require advanced notice.

## East of Lembeh

During the two years of the COVID-19 pandemic, we were unable to accommodate international guests.

However, we took advantage of the downtime to explore dive sites outside the strait by interpreting nautical charts.

With support and funding from the Mayor of Bitung, we discovered over 20 dive sites and continue to uncover new areas of interest, featuring diverse underwater landscapes, walls, sharks, eagle rays, and other occasional pelagic animals.

The East of Lembeh dive adventure will be a three day trip, leaving the resort at 07:30 and returning about 16:00.

## East of Lembeh Dive Trip Cost

The dives from your diving package can be transferred to East of Lembeh dives but there will be a fuel surcharge of **IDR 3,900,000 incl. PPN per boat.**

The more divers on a single trip the cheaper the fuel surcharge will be for each diver.



East of Lembeh

## Bangka Islands

Bangka, located in the diver's paradise of North Sulawesi, offers a variety of dive sites that will surely spice up your diving experience. This island is situated at the intersection of the Pacific Ocean, the Celebes Sea, and the Moluccas Sea, making it a vital destination for Manado based divers and live-boards.

With over 25 dive sites, Bangka features a diverse topography that includes walls, pinnacles, gorges, and swim-throughs. You will have the chance to encounter pelagic, reef fish, and critters amidst the vibrant reefs that are teeming with soft corals, sea fans, and sponges. Schools of tuna, fusiliers, and mackerel patrol the rock pinnacles, while reef sharks occasionally make their presence known.

Don't forget to have your camera ready to



Bangka Islands

capture shots of the pygmy seahorses, harlequin, and tiger shrimps. You might find it difficult to choose between macro and wide angle photography.

### Bangka Islands Dive Trip Cost

The Bangka Islands dive adventure will be a three dive day trip, leaving the resort at 07:30 and returning about 20:00.

The dives from your diving package can be transferred to Bangka Dives but there will be a fuel surcharge of **IDR 5,600,000 incl. PPN per boat**. The more divers on a single trip the cheaper the fuel surcharge will be for each diver.

### Batu Kapal

This dive site is suitable only for experienced divers who have logged at least 250 dives.

Once a month, when tides permit, Batu Kapal can be explored by divers. The plateau extends from a depth of over 80 meters to about 30 meters below the surface, and is speckled with pinnacles that rise within 4 meters of the surface.

These pinnacles are covered with abundant soft and hard corals, including rare blue corals that are typically found at greater depths. Due to strong currents in the area, the corals tend to remain small in size.

During the dive, you can expect to encounter black tip and white tip reef sharks, eagle rays, and schools of tuna and mackerel. Batu Kapal also has several cleaning stations, which often attract larger marine animals.

### Batu Kapal Dive Trip Cost

There is no additional charge for transferring your dives from your dive package to Batu Kapal.

The trip will be a two dive trip, leaving the resort depending on the tides.

If Batu Kapal is able to be dived after the surface interval we will take advantage of the second opportunity but more often than not the second dive will be nearby at Dante's Wall.

Batu Kapal





# LOCAL SIGHTS

Lembah presents not only a range of local sights to explore above the water on your non-diving days but also offers captivating cultural experiences. We would be delighted to arrange visits to several points of interest and provide opportunities to immerse yourself in the local culture.

Please Note:

- Booking is required at least 48 hours in advance.
- Cancellation made less than 24h before the tour date is subject to a 50% charge.
- Prices & Conditions are subject to change without notice.
- Tour Prices already include Service Charge and Government Tax.

Lake Danau Linow

# Explore Minahasa

See ancient historical places, mystical volcano craters, eat at a scenic lake in a massive caldera, visit an traditional market in Tomohon and enjoy the sunset at lake Danau Linow.

**Full day trip - min. 2 people**  
**IDR 1,200,000 incl. PPN per person**

## Mahawu Volcano

### Mahawu Volcano

Mount Mahawu, situated in North Sulawesi, is a strato-volcano that stands 1,311 meters above sea level. It features a 180-meter wide crater with a depth of 140 meters, along with two pyroclastic cones on its northern slope. The area around the mountain is home to the endemic Sangihe honey-birds, and while the summit is often shrouded in clouds, it offers spectacular views of the protected forest below.

Rurukan, located at the foot of Mount Mahawu, is famous for its cool air, foggy rice fields, and fertile soil that produces yellow roots, onions, cabbage, bok choy, chili, and tomatoes. Despite being an active volcano, visitors can safely walk around the crater, which is only a short flight of steps up from the car park. Tomohon City, which lies near-

by, is renowned for its traditional market that offers local products such as vegetables, rice, and spices like cinnamon, nutmeg, cloves, and pepper. It is a vibrant place to explore, with many photo opportunities and delicious local specialties to try.

Mount Mahawu is a strato-volcano located east of Lokon- Empung Volcano in North Sulawesi. Mount Mahawu, stands 1,311 meters above sea level, and boasts a crater width of 180 meters with a depth of 140 meters and two pyroclastic cones on the northern slope.





### The Waruga History of the Minahasa People

The Waruga Cultural Heritage area located in Sawangan Village, North Sulawesi, consists of megalithic stones that are known locally as Waruga. These stones, which are nearly seven centuries old, were used as sarcophagi to bury the bodies of the Minahasan people during the 8th century AD. Engravings on the sarcophagi show the deceased buried in a fetal position.

According to Anton Jatuna, an interpreter of Taman Waruga, the Dutch government prohibited the concentration of Waruga in one location due to the high incidence of cholera caused by decomposition. Since then, the Minahasan people have been prevented from burying bodies in Waruga. However, Anton added that some rural residents still have Waruga in their homes, and it is still considered an ancestral relic by some Minahasa citizens.

### Lake Tondano

Lake Tondano is the largest lake in North Sulawesi is Lake Tondano, situated about 40 km away from the city of Bitung and 600 meters above sea level. The lake has a rocky and steep shoreline and extends in a generally north-south direction. Its surface area can vary from 4,278 to 5,600 hectares.

According to local legend, there were once towering volcanic mountains in the Tondano area. These mountains had catastrophic volcanic eruptions that transformed the land into a large puddle of rocks and lava, eventually becoming the lake we see today. Locals also believe that the lake was formed due to vol-

canic eruptions ("kaweng kembeng"), where a massive crater was created that later filled with water to form Lake Tondano.

Lake Tondano is a popular tourist attraction and is often compared to Lake Toba in North Sumatra due to its natural beauty. Visitors can enjoy the scenic view of the lake and dine on fresh grilled fish and other seafood, which are abundant in the numerous fish farms in the area. Many locals and tourists alike flock to the lake on weekends to enjoy its beauty and culinary offerings.



Minahasa Tribesman

Mount Mahawu

Lake Tondano

### The Traditional Market of Tomohon

The Tomohon Market in the mountains of North Sulawesi, is a traditional market known for its local products such as tomato, chilli, onion, garlic, rice, and vegetables which grow in these volcanic rich soil. But not just an abundance of vegetables, but also intense spices are sold here, which is a popular gift to bring home to your friends and family.

Celebes, although not as famous as the Moluccas for their spices, was also part of the Dutch spice empire Cinnamon, nutmeg, cloves, and pepper are found and are of a fragrance and exquisite quality that is rarely found in elsewhere.

Here we spend time maybe drinking a young coconut, eating freshly baked local specialities or just take some photos from this colourful place.

### Three Colour Lake

Enjoy tea & sweets during sunset at Danau Linow.

Lake Linow, also known as the Three-Colour Lake, is a volcanic lake situated in the Tomohon district of North Sulawesi.

Visitors are treated to a unique experience as the lake appears in changing shades of deep blue, turquoise, green, and yellowish-green, all thanks to the high sulfur levels in the water, which are further affected by the sun's rays.

The lake is flanked by the Lokon and Mahawu mountains, providing a cool and refreshing atmosphere in the area. It is no wonder that Tomohon is called the "City of Thousand Flowers" due to the beautiful panorama. The name "Linow" is derived from "Lilinowan" in the Minahasa language, meaning "gathering place of water."

It is common to witness the water's colour shift from green to blue to amber due to the sulphur in the lake and the refraction and reflection of sunlight.

Lake Danau Linow





# Tangkoko National Park

This nature reserve is a sanctuary for at least 127 mammal species, 233 bird species, and 104 reptile and amphibian species.

Over three-quarters of these species, including 79 mammals, 103 birds, and 29 reptiles and amphibians, are indigenous to Sulawesi. Of particular note is the Celebes crested macaque, a threatened species with a population of just 5,500 remaining on the island.

The Tangkoko Batuangus Nature Reserve offers an opportunity to explore open grasslands and hike into the forest with local guides, where visitors can observe various wildlife such as black apes, Maleo birds, snakes, wild pigs, hornbill birds, and deer.

However, special attention is given to the tarsier monkeys, endemic to Sulawesi and consisting of four subspecies. These tiny creatures, weighing just over 100g and measuring around 10cm in head and body length, are recognised for their long fossil record and unique leaping ability, attributable to their elongated tarsal region. The tarsiers are particularly active at dawn and dusk.

The Tangkoko Batuangus Nature Reserve, situated in the northern part of Sulawesi and about 45 minutes' drive from Bitung, covers an expanse of around 8,700 hectares and is home to three mountains: Mount Tangkoko (1,109 meters), Mount Dua Saudara (1,978 meters), and the Batuangus Batu Putih areas

(1981 meters), totaling 8,718 hectares. While visits are limited to the Batu Putih area, the reserve provides a haven for a vast array of flora and fauna.



**Hornbill Birds**

# Beach Hopping

Half or Full Day Trip - min. 4 persons  
IDR 600,000 incl. PPN per person

**Bitung  
Fish Markets**



Serena Beach can be found in Aertembaga urban village, situated between Bitung and Lembeh Island. It is a small island that is not inhabited, and is easily accessible from Bitung City, only a 15-minute boat ride from Solitude Resort Lembeh. Its crystal-clear waters and healthy surrounding reefs offer a delightful experience.

Indonesia boasts not only world-famous coral reefs but also approximately 3 million hectares of mangrove forest along its 95,000km coastline. Mangrove forests in Indonesia account for about 22% of all mangrove forests globally. Exploring these healthy mangrove ecosystems, both above and below the water surface, can be an amazing experience.

Putus Island is uninhabited and has rocky terrain with scrub vegetation. Located off the northeast coast of Lembeh Island and away from Bitung City, it benefits from good tidal action due to its proximity to the open sea, which supports a healthy reef with a variety of coral fish.

Batu Angus Nature Park is another popular tourist destination in Bitung City, along with Batu Putih Park in the north. The park is named after the charred-looking stones found there, with a beach covered in jet-black pebbles lining the coastline. Visitors to Batu Angus have several options, including enjoying the sea at the unique beach, swimming in the natural rock pools, or climbing the steep cliffs between the rows of shady pine trees, or simply taking in the scenic surroundings.





**Bitung  
Fish Markets**

# Bitung Fish Market

**Half or Full Day Trip - min. 2 persons  
IDR 500,000 incl. PPN per person**

## Local Life

Bitung, a city located in North Sulawesi, Indonesia, is believed to have been named after the Witung tree, which is commonly found in the area, according to local folklore. The natural harbour in Bitung made it a preferred location for fishermen over Kema, which was the primary trading port until the 1940s. The majority of the inhabitants of Bitung are the Sangir, a sub-tribe of Minahasan, while Javanese, Gorontalo, and Tionghoa (Chinese) make up the minority population.

Christianity is the predominant religion in Bitung and North Sulawesi, while Muslims and Buddhists are the minority. The local Manadonese language is widely spoken, but Bahasa Indonesia is used for written and legal communication. Bitung's main industry

is dominated by agriculture and plantation, but due to the development of Bitung Port, the fishing industry has a significant presence, making Bitung the largest fishing port in Sulawesi.

The main catch in Bitung is Tuna (familia scombridae), locally known as "cakalang," which is widely exported globally and canned at the local processing plants. Commercial fishermen also catch skipjacks, mackerel, and bonito, while visitors can observe local fishermen using traditional methods of hook/lines and free dive spear-fishing. A visit to the main market provides an insight into local life in Sulawesi and a unique and bustling experience, unlike the sterile environment of international supermarkets and grocery stores.

# SOLITUDE WORLD

Liveaboard or Resort, we serve as your gateway to the Coral Triangle.

Solitude World is the ultimate destination for adventurers seeking to explore the pristine waters of the Coral Sea while enjoying the comforts of relaxed luxury.

We offer an extensive range of experiences, from encountering nudibranchs and unique critters to exploring bluewater reefs and big pelagics. Our three liveaboards, Solitude Adventurer, Solitude Gaia and Solitude One, are carefully scheduled to coincide with the prime diving seasons in Raja Ampat, Banda Sea, Forgotten Island, Komodo, as well as in the Philippines and Palau.

Solitude Lembeh Resort, is renowned as one of the critter capitals of the world, providing you with ample opportunity to explore from the black sand to the blue water, and even up to the local highlands.

We also offer Solitude Acacia Resort, located in the Philippines, which is the perfect destination for more macro critters especially nudibranchs and blackwater diving.

With Solitude World, you can rest assured that you will witness some of the world's most impressive marine creatures, and dive in the world's most abundant waters while experiencing the Solitude World's service and comforts.

## Liveaboards

### Solitude Adventurer Indonesia

Embark on an extraordinary voyage of exploration and immersion into the untamed beauty of the Indonesian islands with the Solitude Adventurer. This remarkable catamaran, a masterpiece conceived and custom-built by Austal in Australia, invites you to discover the raw nature that thrives both above and below the waterline. Originally launched as a family yacht to commemorate the new millennium for a prominent Singaporean family, the Solitude Adventurer has undergone meticulous transformations to offer unparalleled hospitality and diving experiences.

Step aboard and be captivated by the sheer magnificence of this 36m (118ft) long and 12m (39ft) wide vessel. Bathed in natural light and featuring an abundance of space, the Solitude Adventurer ensures your utmost comfort as you embark on unforgettable cruises to Indonesia's most awe-inspiring destinations. Prepare to be enchanted by the untouched splendour of Komodo, the Forgotten Islands, Raja Ampat, and beyond.

Above the waterline, towering cliffs stand majestically, framing the rugged landscapes that beck-

on exploration. From breathtaking viewpoints, gaze upon the awe-inspiring vistas that unfold before your eyes, only witnessed by a fortunate few. Below the waterline lies a world of wonder, where vibrant coral reefs teem with an astounding array of marine life. Dive into crystal-clear waters and encounter the captivating beauty that resides beneath the surface.

The Solitude Adventurer has been meticulously outfitted to cater to your every need and desire. Each detail has been carefully considered, ensuring your journey is one of utmost comfort and indulgence. Immerse yourself in luxurious amenities, relish delectable cuisine served in elegant surroundings, and unwind in spacious accommodations that blend modern elegance with a sense of tranquillity.

As you set sail on this extraordinary vessel, you embark on a voyage that transcends the ordinary. Discover the remote paradises of the Indonesian islands, where nature's wonders unfold in their purest form. Prepare to be enchanted, as the Solitude Adventurer invites you to experience a realm of untouched splendour and create memories that will last a lifetime.



Solitude One  
Palau & the Philippines

Solitude Acacia Resort  
Anilao, the Philippines

Solitude Gaia  
Palau

Solitude Adventurer  
Indonesia



## Solitude One

### Palau and The Philippines

Embark on an unforgettable adventure with Solitude One, exploring the blue wonder of Palau and The Philippines, a must-visit destination for divers and ocean lovers alike. Dive into the crystal-clear waters teeming with vibrant marine life, magnificent coral reefs, and awe-inspiring underwater landscapes. Immerse yourself in the rich biodiversity and captivating beauty of these pristine destinations, creating memories that will last a lifetime. Prepare to be amazed as you discover the hidden treasures and experience the unparalleled magic of these remarkable underwater realms.

Originally a merchant's vessel, the MV Solitude One has been rebuilt to set new standards in hospitality and professionalism. Equipped with the latest onboard technology, it ensures the comfort and safety of all guests throughout their journey.

In fact, it embarked on a remarkable charter for a cross-border expedition to Woleai Atoll in the middle of the Pacific, partnering with NASA and the Exploratorium for the Total Solar Eclipse in 2016.

The dive deck, conceptualised and designed by experienced dive professionals, offers everything you need for a fantastic dive within arm's reach. With ample space to accommodate up to 24 divers, it provides storage for scuba equipment, accessories, video and photo gear, rinse tanks, and even features six freshwater showers. Your needs are carefully attended to, both before and after your dive.

This extraordinary vessel marries extravagant design and layout with the functionality and comforts that are reminiscent of home. The MV Solitude One promises an unparalleled experience for its valued guests, ensuring they feel at ease throughout their journey.

## Solitude Gaia

### Palau

The Solitude Service on Solitude Gaia embodies our dedication to crafting an exceptional liveaboard experience that seamlessly blends comfort, adventure, and communion with nature. Our team is committed to ensuring that every moment of your journey is marked by attentive care and exceptional service.

Upon boarding, you'll find yourself embraced by an environment where your needs are met with genuine warmth and a proactive approach. Our staff, well-versed in the art of hospitality, understands the distinct requirements of both scuba diving enthusiasts and travellers seeking a fusion of luxury and exploration.

Our culinary offerings epitomise our pursuit of excellence. Delight in carefully curated cuisine prepared with locally sourced ingredients, enhancing your dining experience. Whether dining under the stars or within our dining area, each dish crafted by our culinary team promises a delightful journey for your palate.

Beyond the dining experience, our range of amenities and personalized services cater to your preferences. Whether it's engaging in water sports, indulging in a relaxing massage, or embarking on guided tours of underwater marvels, our team is dedicated to fulfilling your desires.

Our unwavering commitment to responsible and sustainable tourism ensures that your journey leaves a positive impact on the environment. We firmly believe in experiencing nature's beauty while actively safeguarding it, striving to minimize our ecological footprint.

The Solitude Service aboard Solitude Gaia mirrors our passion for providing scuba divers and adventure enthusiasts with a world-class liveaboard experience. It's a service infused with warmth, expertise, and a deep commitment to environmental stewardship, ensuring that your journey is not just memorable but also purposeful.



## Resorts

### Solitude Acacia

#### Anilao, The Philippines

Solitude Acacia, located in Anilao, The Philippines, has undergone a remarkable transformation. Formerly known as 'Acacia Resort and Dive Centre,' it partnered with Meseta Corp in 2018 to bring a fresh and contemporary design, elevating the resort to new levels of quality and professionalism under Solitude World's management. Our commitment is to provide an exceptional experience for our guests.

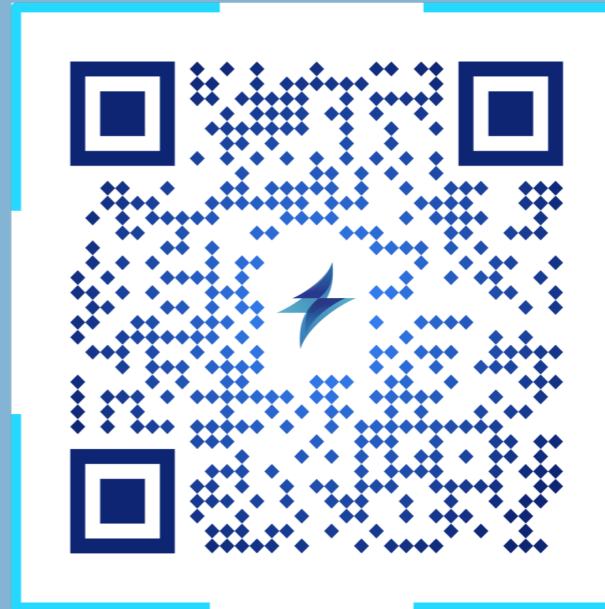
Immerse yourself in a breathtaking dining experience at our botanical restaurant, situated on the second level with 180° glass walls that offer panoramic views of the ocean and pool. Our modern and stylish restaurant provides the perfect setting to savour a variety of local and international cuisine. Whether you choose the air-conditioned glass-walled area or the al fresco dining option, you'll be surrounded by the beauty of our resort.

Our fully equipped dive centre is designed to cater to divers of all levels, including beginners. With a contemporary and functional design, we offer courses and training in our spacious classroom that can accommodate up to 12 students. Additionally, our resort's swimming pool provides a convenient and safe environment for dive training.

Solitude Acacia Resort welcomes guests with 25 spacious and well-appointed rooms, featuring a fresh new contemporary design. Each room is thoughtfully crafted to blend modern aesthetics with the natural surroundings, ensuring a comfortable and stylish retreat amidst the tropical gardens.

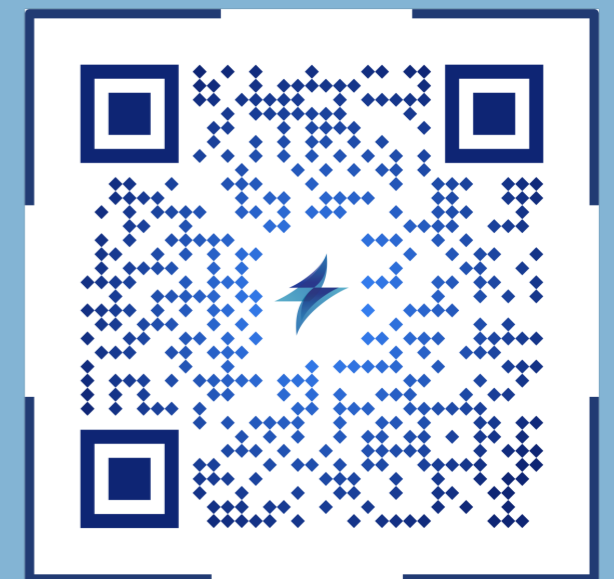


CONTACT FORM



## CONNECT WITH US

Our team is thrilled and prepared to assist you in planning your next adventure with us. Keep in touch by scanning the QR codes and let the journey unfold.



EMAIL US

# RETURNING GUEST PRIVILEGES

## RESORTS Solitude Lembeh & Solitude Acacia

Enjoy PHP 1,500 or IDR 450,000 credit per person.  
Valid only for credit at the in-house bar and restaurant; for in-service laundry, equipment rental and EANitrox upgrade.

## LIVEBOARDS Solitude Adventurer, Solitude Gaia & Solitude One

Enjoy USD 50 onboard credit per person.  
Valid only for credit at the onboard bar and boutique; for in-service laundry, VSAT internet, equipment rental and EANitrox upgrade.

Complimentary Cabin Upgrade on check-in if available.

### Conditions for Credits:

- Applicable only to Solitude World diving or non-diving packages
- Verification is required. We can verify the previous bookings ourselves. However, under some circumstances we may ask you for proof of previous booking.
- Privileges are not transferable
- Credit cannot be used as means to negotiate additional discounts or benefits
- All privileges are only valid for the stay of package duration
- Credit balanced or any unused privileges cannot be carried forward nor refunded.
- Strictly no exchange or cash permitted
- Solitude reserved the right to rescind these privileges

[www.solitude.world](http://www.solitude.world)

# SOLITUDE SOCIALS

INSTAGRAM



Come and join us on our social media platforms to keep in touch, stay informed and become part of a lively community.

FACEBOOK



WWW.SOLITUDE.WORLD

[www.solitude.world](http://www.solitude.world)