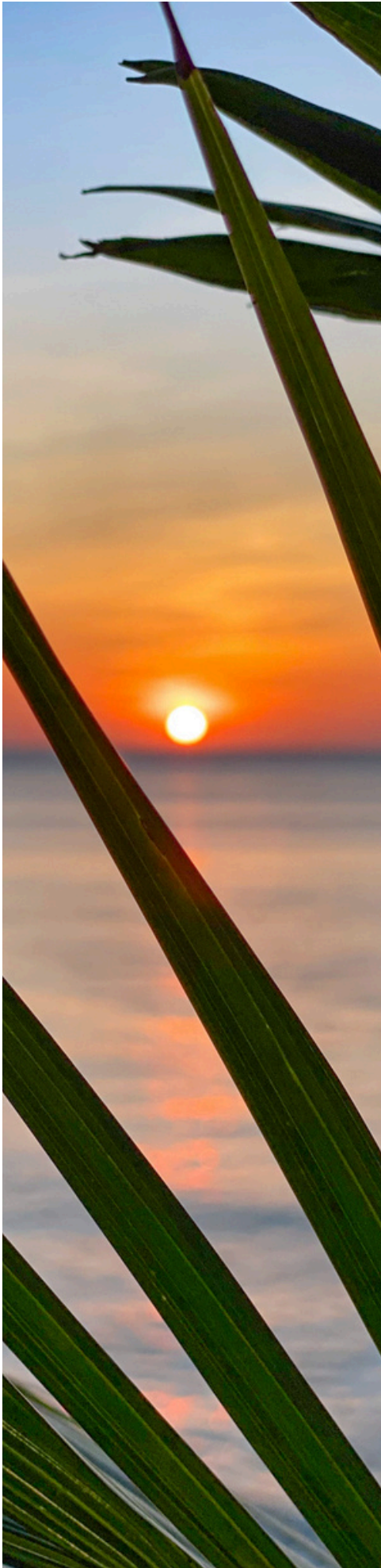


A high-angle, wide shot of a resort deck. The deck is made of dark wood and features several lounge chairs with dark metal frames and light-colored cushions. A large palm tree is on the left, its trunk and fronds framing the scene. In the background, a small yellow boat with outriggers is anchored in the clear blue water. The sky is a vibrant blue with a few wispy clouds on the right. The overall atmosphere is serene and tropical.

SOLITUDE

acacia resort

DATA SHEET



ABOUT

Embark on an unforgettable journey at Solitude Acacia Resort, where serenity and adventure intertwine harmoniously. Engage in exhilarating water and land-based activities, immersing yourself in vibrant coral reefs and a world of excitement that will leave you fulfilled and yearning for more.

This sought-after diving destination is teeming with remarkable species, including diverse nudibranchs and rare endemic creatures. Dive into the thrill of blackwater diving, encountering otherworldly "aliens" that ignite wonder and awe.

The iconic and picturesque acacia tree stands as the centerpiece of Solitude Acacia, providing natural shade to our glass-walled restaurant and pool area. Savor tantalizing fusion cuisine that delights your taste buds.

With contemporary amenities, breathtaking views, and opportunities for hikes, beach exploration, and a volcano day trip, this haven achieves the perfect balance for your escape. Embrace the tranquility and modern comforts of Solitude Acacia Resort.

CONTACT

JONAS HEEB

Resort Manager

THE RATES

Please refer to availability information on www.solitude.world or emailus@solitude-acacia.com

SOLITUDE

DESTINATION



RESORT DETAILS

Resort Name	Solitude Acacia Resort formerly Acacia Resort & Dive Centre
Resort Style	Modern Boutique Resort
Resort Address	Barangay Ligaya, Mabini Circumferential Road, Mabini Batangas, The Philippines
Phone	+63 (0) 9662 002 941
Email	emailus@solitude-acacia.com
Website	www.solitude.world
Social Media	
Facebook	@solitudeacaciaresort
Instagram	@solitude.acacia
Contact Persons	
Reception	Alphi De Claro Angela Bello Lelibeth Apostol emailus@solitude-acacia.com
Inquiries & Reservations	Miki Mori emailus@solitude.world
Other Contacts	WhatsApp, WeChat, LINE, Facebook Messenger

SOLITUDE

OUR ROOMS

Overview

There is a selection of three (3) room types, each ranging in size from 27 to 41 square meters:

- Sea-View Suite
- Sea-View Deluxe
- Deluxe

Every room is adorned with a modern charm and equipped with facilities, allowing you to customise the bedding arrangement as King or Twin to cater to your preferences.

Features

- Spacious bedroom
- Individually controlled air-conditioning
- Writing desk and wardrobe
- Electronic in-room personal safe
- Free internet connection via WIFI
- In-room coffee/tea-making facilities
- Refrigerator/mini bar
- Hairdryer and shower amenities
- Smart LCD TV with international and local channels



acacia resort

OUR ROOMS



Sea View Suite

Located on the top floor facing the Mabini Sea. The Sea View Suite is the largest of our room options. Direct from your private balcony you can be sure to relax with stunning views of the water, our iconic acacia tree and breathtaking sunsets.

Number of units:	Four (4)
Bedding configuration:	King or Twin
Outlook:	Sea View
Total room size (overall):	41.7sqm (448.8sqft)
Maximum occupancy:	3 Adults + 1 child (10 years or below at time of check-in) sharing the bed with adults.



Sea View Deluxe

Located on the ground and first level, these rooms provide a beautiful view of the swimming pool and the ocean.

Number of units:	Nine (9)
Bedding configuration:	King or Twin
Outlook:	Sea View
Total room size (overall):	31sqm (333.6sqft)
Maximum occupancy:	3 Adults + 1 child (10 years or below at time of check-in) sharing the bed with adults.



SOLITUDE

OUR ROOMS



Deluxe

Located behind our sea view rooms, you're just a moment away from the restaurant, bar, and pool area.

Number of units:	Twelve (12)
Bedding configuration:	King or Twin
Outlook:	Garden
Total room size (overall):	27-37sqm (290.6-398.2sqft)
Maximum occupancy:	3 Adults + 1 child (10 years or below at time of check-in) sharing the bed with adults. Room 502 has 3 single or 1 king and 1 single bed



TARIFFS

as of 01 January till 31 December 2025 with no black out dates.

The Rates

Rate Sheet Validity: 1 January 2024 to 31 December 2024 with No Black Out Dates

Accommodation		Single		Twin or Double		Triple
Sea View Suite	USD	230	USD	155	USD	145
Sea View Deluxe	USD	210	USD	135	USD	120
Deluxe	USD	175	USD	110	USD	95

Rates are per Person per Night, include Breakfast and prevailing VAT only

Full Board Stay Package		Single		Twin or Double		Triple
Sea View Suite	USD	270	USD	195	USD	185
Sea View Deluxe	USD	245	USD	170	USD	160
Deluxe	USD	210	USD	150	USD	135

Rates are per Person per Night, include Full-Board Meal Plan (Table d'hôte or Buffet) and prevailing VAT only

Ages 11 and above

As Above

Ages 6 to 10

25% Discount – Without Extra Bed

Ages 5 and below

Not considered as room occupancy sharing and without extra bed. 50% off selected menu Item as Kid's Meal

acacia resort

RESORT FACILITIES

24 Hour Guest Services

Acacia Restaurant & Bar

The Acacia Restaurant is situated on the second level overlooking the ocean, offering a breathtaking 180° glass-surrounded view of the ocean and pool. It presents a perfect setting to enjoy local and international cuisine in an air-conditioned greenhouse, or opt for the alfresco dining area. The restaurant operates from 07:00 am to 10:30 pm, with music being toned down at 10:00 pm to respect the guests who have retired for the night. For those who can't wait for mealtime, we have an à la carte menu to complement our full board meal plan policy.

The last order for food is at 09:30 pm, and room service is also available.

Click to view the [Acacia Restaurant Menu & Bar MENU](#).

Baby Sitting Services

Subject to availability. Advance request is encouraged. Limited numbers of babychairs are available.

Internet

We offer complimentary Internet via Wi-Fi™ connection available throughout the resort.

Laundry Services

Laundry services are available daily at additional cost.

Massage

We can make arrangements for a masseuse to provide services during your stay, but please note that we require a minimum of 30min advance notice.

Swimming Pool

The swimming pool is 100sqm and the central feature of our resort overlooking the Mabini Sea. Starting from 3 feet (0.91 m) descending to 10 feet (ca. 3 m), the Acacia Resort pool is perfect for a leisurely dip and scuba diving lessons.

TV Entertainment

Television is available in the guest rooms, restaurant, camera lounge, and classroom.

Common Toilets & Showers

There are four (4) common showers and three (3) toilets located behind the camera lounge. There are additional toilets at the dive center, next to the Acacia Restaurant and next to the Guest Service Desk.

SOLITUDE

THINGS TO KNOW

Airport Transfer

Advance reservation is required. Solitude Acacia has available in-house guest transfer services (may be provided by a 3rd Party). We can arrange a car or van transfer to and from the airport for an additional cost. Our resort is approximately a 110-130 minutes drive from Manila International and Domestic Airport.

Check-in Procedures

Official check-in time is 02:00 pm.

However, we will try to accommodate earlier arrival guests based on the availability (earliest from 11:00 am) and the readiness of each designated room. If not available, the guests will be directed to the Acacia Restaurant while waiting for their rooms.

To speed up the process of guest check-in, all booking travel agents are requested to email a copy of the 'Hotel Service Voucher' and specify all instructions of required services, at least 5 days prior to each guest's arrival at the resort.

For 'first-time guests', we would highly recommend that each booking agent provide our reservation department with as many particulars as possible when finalising the reservation.

Check-out Procedures

Our official checkout time is at noon (12:00 pm).

For the courtesy of our next expected arrival guests who have booked the same room, we would expect the guest to vacate the room on time. We will endeavor to offer one to two hours of extended checkout time, subject to room availability, upon a timely request. Any extended stay until 05:00 pm shall be considered as a full extension night with the walk-in room rate.

Conference Room

We have a conference room above the garden lounge that can accommodate up to 20 people. Advanced reservation is encouraged for this complimentary facility.

Credit Card

We can only accept Mastercard and Visa credit cards. We are not responsible for the credit card holder's bank fees that the holder may be charged in addition to the amount payable to the resort when they use their credit card.

THINGS TO KNOW

Family Plan

Any extra guest, whether it be child or adult, can be accommodated in all categories of rooms.

We have 14 adjoining rooms perfect for families.

For an extra adult guest, they are subject to the additional guest charge. Two (2) Children occupying one separate room will be charged at a single-room rate.

Money Changer

We are not a licensed money changer hence we are unable to transact officially any currency exchange.

Parking

We have a parking space for 12-15 cars (first come first serve).

Pet Friendly

Feel free to inquire about our pet-friendly policy as we warmly welcome pets at our establishment.

Social Media

We encourage you to share your encounters with the fascinating new critters you'll undoubtedly encounter, as well as your enjoyable experiences with us. Feel free to follow, like and tag us on social media platforms:

Instagram

[@solitude.acacia](#)

[@solitude.world](#)

Facebook

[@SolitudeAcacia](#)

[@solitudeliveboardsandresorts](#)

SOLITUDE

THE DIVING

Your safety is always the most important aspect of Solitude Acacia and at the forefront of all decision-making.

A fully equipped dive centre is built to cater to all levels of divers or soon-to-be divers. The dive centre and its staff provide the highest degree of safety standards that Solitude Liveaboards and Resorts is known for.

Courses are conducted on-site and in the surrounding calm, shallow and open water.

Equipped with a brand-new Bauer membrane compressor. The compressor room is specially designed for the natural influx of fresh air, the dive centre uses only the best quality high-pressure air purifiers to ensure every dive is as safe and enjoyable as it should be.

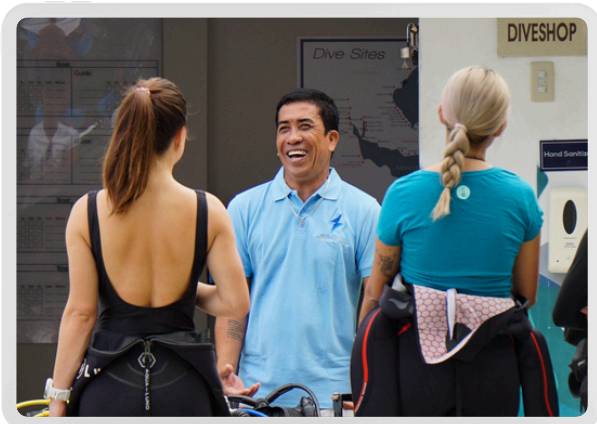
The dive centre also provides an Enriched Air Nitrox option. In addition, for those who enjoy underwater photography, you can be sure that your camera gear will enjoy the comfort in a spacious camera room with 28 camera stations and a camera lounge for editing. All stations have international voltage-regulated sockets for charging batteries. Drying stations, and large freshwater tubs for rinsing, are arranged for your ease of use.

We have our own classroom that can fit up to 12 students.



Each member of the dive team is trained both in First Aid and In-Water Rescue and are able to provide education and lessons in all levels of PADI. All of Solitude's dive boats are equipped with Emergency First Aid Kits and mobile phones. Located on-site at the dive centre for additional support if required are two (2) 40Litre Medical Oxygen tanks.

Batangas City approximately 60 minutes by car hosts the nearest decompression chamber.



The dive centre operates daily from 08:00 am to 04:30 pm, with the exception of night dives. Night or blackwater dives can be arranged for an additional fee.

We maintain a 2:1 diver-to-guide ratio to ensure personal attention, safety, and an enhanced diving experience for every guest.

YOUR SAFETY



Safety & Security

We provide a fire extinguisher, smoke detector, emergency light and torch light in every room. Security Personnel is on-site 24 hours daily and CCTV is installed throughout the resort.

Furniture and fixtures throughout our resort are designed to be comfortable, friendly and safe to use.

Non-In-House guests are welcomed but must register at our Guard House and Reception to be directly or indirectly escorted/supervised when on our resort property.

Medical Service

24-hour on-call medical doctor is available. There is 1 International Hospital with a decompression chamber located in the city of Batangas approximately 60 minutes away.

We have a comprehensive first aid kit on site. Our resort is affiliated with several clinics which offer 24-hour doctor assistance.



SOLITUDE

YOUR EXPERIENCE



OTHER GUEST ACTIVITIES

The following great activities (might be provided from a 3rd party) can be arranged from our Guest Service Desk:

- Diving/Free Diving/Snorkeling
- Island hopping/ Beach BBQ
- Hiking to Mt. Gulugod baboy (1H)
- Kayaking/Stand Up Paddle Boarding
- Massage

Island Hopping



SCAN ME

Mt. Gulugod Baboy



SCAN ME

Open Water Diver Course



SCAN ME

Discover Scuba Diver

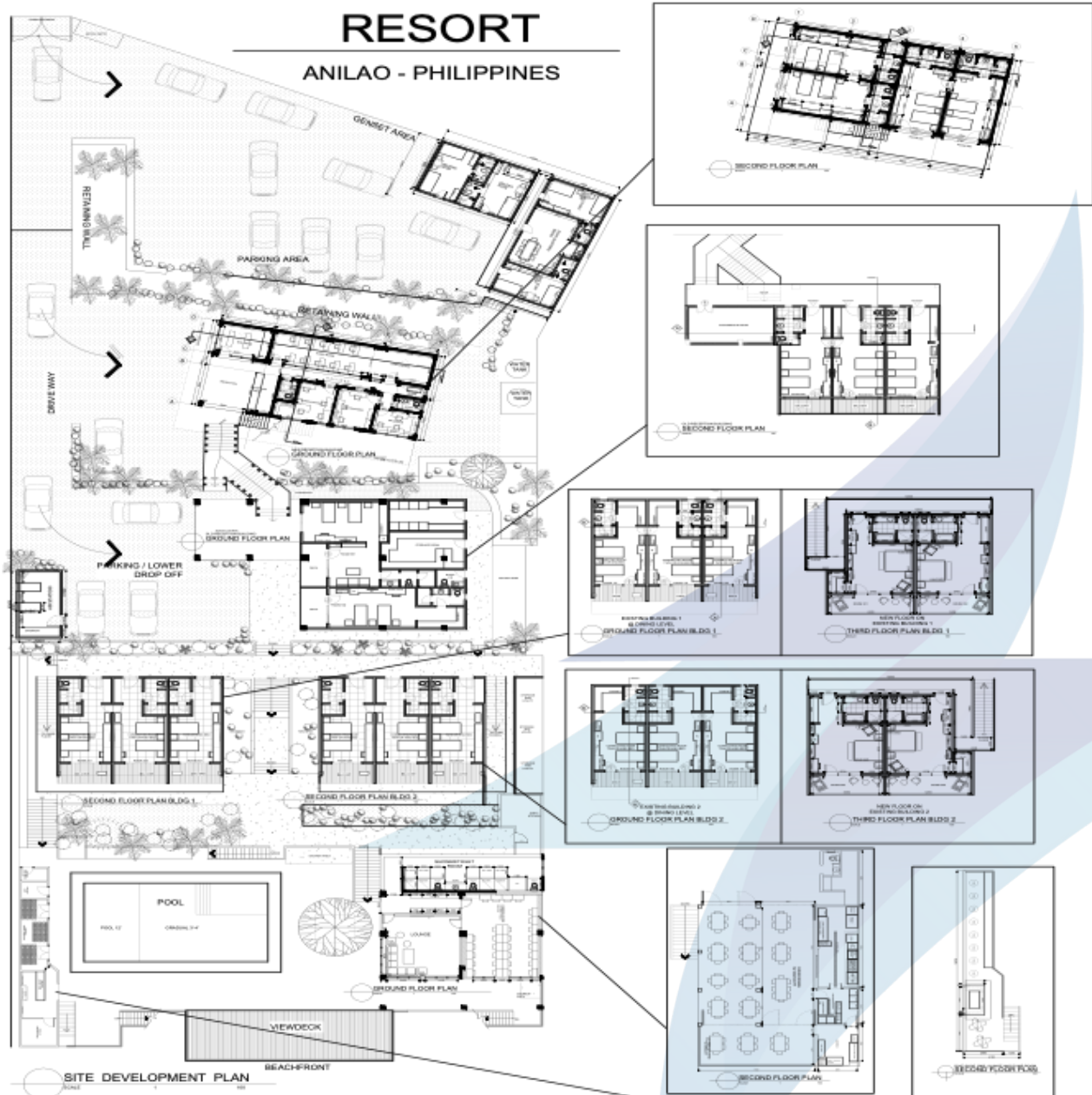


SCAN ME

RESORT MAP

SOLITUDE-ACACIA RESORT

ANILAO - PHILIPPINES



SOLITUDE