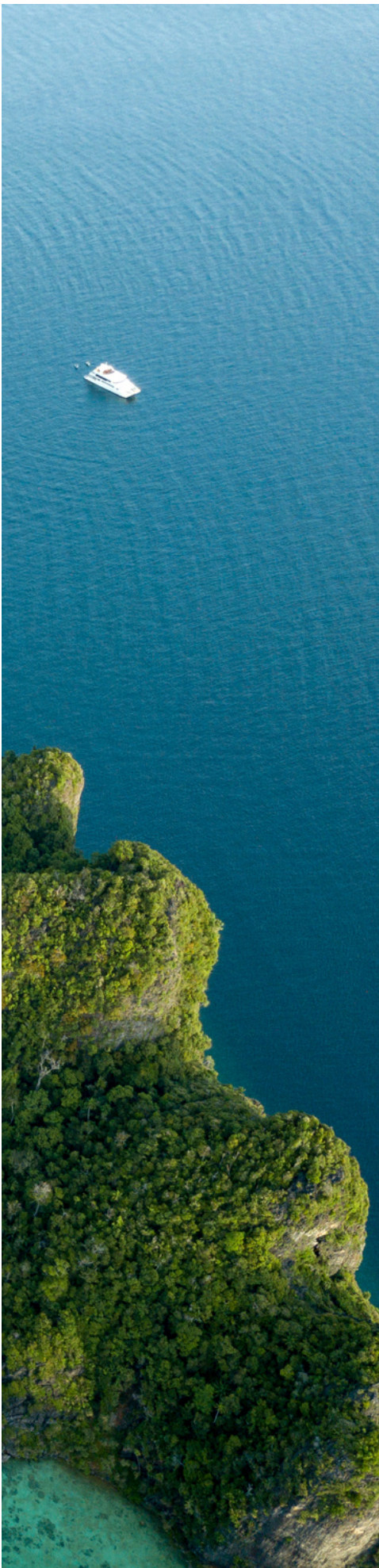




SOLITUDE
ADVENTURER
liveboards • Indonesia

DATA SHEET



ABOUT

INTRODUCTION

Solitude Adventurer, the second liveaboard vessel operated by Solitude Liveaboards and Resorts, invites you on an extraordinary diving adventure through the captivating region of Indonesia. This meticulously crafted 36m (118ft) aluminium catamaran is designed to provide divers with an unforgettable holiday experience, combining relaxed luxury and comfort.

Embarking on a diving expedition with Solitude Adventurer takes you to some of Indonesia's most coveted destinations. Explore the majestic Banda Sea, Ambon, Alor, Maumere, Komodo National Park and Raja Ampat, where the azure Indonesian waters teem with mesmerising marine life and vibrant coral formations. These remote and pristine dive sites offer an immersive underwater adventure, filled with encounters with manta rays, tropical fish schools, mola mola, hammerheads, whale sharks, and more.

THE RATES

Please refer to schedule availability information on **www.solitude.world** or **emailus@solitude.world** for cruise itineraries of Palau and the Philippines.

SOLITUDE

DESTINATIONS



VESSEL FACTS

Type and Year Built aluminium catamaran. Originally Built in 2000 and refurbished in 2017.

Port of Registry/Flagged Indonesia

Cruising Itinerary Routes Indonesia

Length 36m (118.11 ft) **Beam** 12m (39.37ft) **Draft** 1.5m (5.1ft)

Cruising Speed 10 Knots, top speed 23 Knots

Diesel Capacity 25,000L (6,604 US Gal.)

Cruising Range ± 1600nM (±2963KM).

Engine & Propulsion Two 1380 HP / 1015 kWMTU

Electricity 2x100kv 240V - 50Hz

Navigation local navigation maps with Furuno GPS chart plotter, radar (long/short), weather plotter and depth-sounder.

Communication System VHF/SB radios, fleet broadband satellite phone & internet, Inmarsat-C.

Ship Safety System GMDSS with EPIRB, AIS, life rafts, emergency survival packs, and a semi-automated fire suppression sprinkler system.

Fresh Water Capacity 6000L (storage) with an onboard water-maker capable of producing 15,000L of fresh water per day.



ADVENTURER

THE DIVING

Dive Skiffs there are two 5.5m 90HP/75HP

Support Skiff 1 x 4.2m 15HP dinghy

Air Compressors 3 x Bauer HP compressor PE300 TE with Bauer B-Kool 680-s air cooler filtered by P41 centralised system.

Nitrox Membrane System AANX550 – 36 (11KW) Rotorcomp NK Evo series with nitrox membrane.

Dive Guides ratio 1 to 6 divers. Private guide service is available for USD150 per diving day (pdd).

Dive Equipment Rental is available, which includes dive computers, but underwater cameras are not included.

Dive Shop surface marker buoy (OPV, SOLAS Reflector), Nautilus Lifeline GPS, spools, dive pointers, drift hooks, o-rings, hoses and other common replaceable spares. Advanced order is preferred to ensure availability.

Nautilus Lifeline GPS is complimentary Nautilus Marine Rescue GPS. Please Note, that if you use the Nautilus Rescue Device, you are responsible for replacing it if lost or damaged.

Surface Marker Buoy (SMB), Lead Weights & Belt are complimentary.

Enriched Air Nitrox Diving EANx 30 to 31%, to provide a more suitable M.O.D for divers.

Scuba Cylinders aluminium 100cu (7 units), 80cu (46 units), 63cu (10 units) with DIN Valves (York Adaptors available) -Twin Tanks Available, Side-Mount Friendly

Rebreather Support rebreather divers are accommodated only on Full Charters, and they need to bring their own cylinders for their rebreather system. We can arrange scrubbers with advanced notice (preferably 60 days or more), but we cannot guarantee availability. Alternatively, divers can also choose to send their scrubbers to us.

Medical Oxygen and Comprehensive First Aid Kits are available

FOR YOUR SAFETY

NO SOLO diving is allowed, even if you are certified.

It is mandatory for **ALL** guests engaging in scuba activities to have an audible signalling device (such as a whistle), a dive computer, a surface marker buoy, appropriate dive insurance coverage, a valid dive certification, and have completed waiver Form A and Form C for the activities.

ALL guests participating in scuba activities **MUST** be equipped with Audible Signalling Device (e.g. Whistle), Dive Computer, Nautilus Lifeline VHF (or similar) and Surface Marker Buoy.

DIGITAL EQUIPMENT

Large Camera Rinsing Tanks 1 large rinse tank and towels just for cameras.

Pressurised Air for Drying is available.

Camera Setup Bench on Dive Deck is available.

Power Socket with universal adapter: Available in guest cabins and, Digital/Camera Studio.

Power Type 200V-220V/50Hz

Surge Protection located in the lounge.

Electrical Plug Adapters and Extensions are available.

E6 Photo Processing is not available.

SOCIAL MEDIA

We encourage you to share your encounters with the fascinating new critters you'll undoubtedly encounter, as well as your enjoyable experiences with us. Feel free to follow, like and tag us on social media platforms:

Instagram

[@solitudeadventurer](#)

[@solitude.world](#)

Facebook

[@SolitudeAdventurer](#)

[@solitudeliveboardsandresorts](#)



ADVENTURER

THE CABINS

Solitude Adventurer features eight (8) cabins, providing accommodation for a maximum capacity of 18 guests.

Taller guests will find comfort in knowing that most guest areas offer adequate headroom. Additionally, every cabin category boasts mattresses with a length of 190cm (6.2ft), ensuring a restful experience for all guests

OVERVIEW

8 Cabins in Total

- **Stateroom** King-Sharing + 1 Day Bed
- **Deluxe Cabins** D1, D2, D3, D4, D5, D6 are all Twin Sharing
- **Quad Cabin** Quad share (4 pax) or Triple share (3 pax), and or Twin share (Main deck twin, 2 pax)

Mattress Sizes

- King Mattresses 180cm x 190cm
- Twin/Super Single Mattresses 107cm x 190cm

Bathroom

Every cabin and stateroom on board is equipped with an en-suite shower (providing both hot and cold water) and a WC featuring a common vacuum-flush system.)

Cabin Comforts

- Central air conditioning system in all cabins, and enclosed guest areas
- Bathrobes
- Face and bath towels
- Hair dryer
- Reading lights
- Shower foam, 2 in 1 Shampoo Conditioner
- Bedding including pillows, duvet, and sheets. Extra pillows and light blankets are available on request.
- Wardrobe organiser with ample hangers
- Universal electrical points conveniently located for gadgets

Ensuite Shower and Toilet

The cabin en-suite showers and toilets are thoughtfully designed to cater to the needs of modern-day users. While the size may vary depending on the cabin category, even the most compact cabins provide sufficient room, shelving, and space to accommodate your personal toiletries. All en-suite facilities are equipped with the following amenities:

- Cold water manual bidet gun
- Seated water closet (WC)
- Separate shower
- Ample space for hanging

Housekeeping Practice

Cabins are cleaned daily. Sheets, bath and face towels are changed every 3 days of use. However, please feel free to request a change at any time when necessary.

Crew

The ship and diving team consist of 14 to 16 crew members.

MAIN DECK

Stateroom Cabin: King Sharing
Maximum Number of Guests: 2 (two)
Mattress Size: 180 cm x 190 cm
Cabin Size (including WC/Shower): 25.16 sqm

Stateroom Single-Supplement is +80% of the cruise schedule per diver rate.
3rd person Sharing Diver or Non-Diver is -20% of the cruise schedule per diver rate.
Non-Diver Rate is -10% of the cruise schedule per diver rate (+Single Supplement Surcharge if applicable).



Quad Cabin: Quad Share
Maximum Number of Guests: 4 (four singles)
Mattress Size: 107 cm x 190 cm
Cabin Size (including WC/Shower): 15.45 sqm

Single-Supplement is not allowed. The Triple Sharing room option is also available.
Twin-Sharing will be the same as the Deluxe Cabin Twin-Sharing cruise schedule rate. Non-Diver Rate is -10% of the cruise schedule per diver rate).

Ensuite Shower



UPPER DECK



Deluxe Cabin D1: Twin Sharing
Maximum Number of Guests: 2 (two)
Mattress Size: 107 cm x 190 cm
Cabin Size (including WC/Shower): 13.4 sqm

Deluxe Single-Supplement is +80% of the cruise schedule rate.
Non-Diver Rate is -10% of the cruise schedule per diver rate (+Single Supplement Surcharge if applicable).



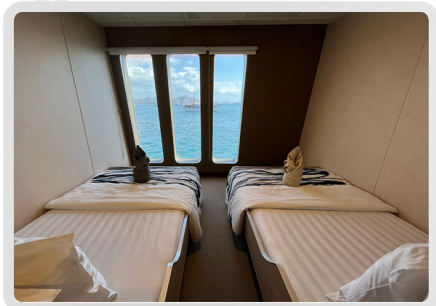
Deluxe Cabin D2 & D3: Twin Sharing
Maximum Number of Guests: 2 (two) each cabin
Mattress Size: 107 cm x 190 cm
Cabin Size (including WC/Shower): 13.2 sqm

Deluxe Single-Supplement is +80% of the cruise schedule rate.
Non-Diver Rate is -10% of the cruise schedule per diver rate (+Single Supplement Surcharge if applicable).



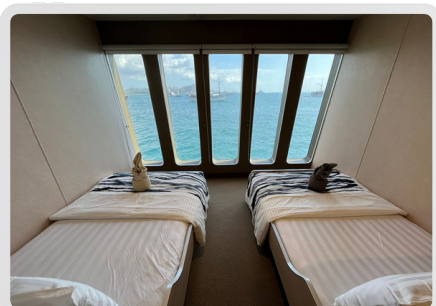
Deluxe Cabin D4: Twin Sharing
Maximum Number of Guests: 2 (two)
Mattress Size: 107 cm x 190 cm
Cabin Size (including WC/Shower): 14.1 sqm

Deluxe Single-Supplement is +80% of the cruise schedule rate.
Non-Diver Rate is -10% of the cruise schedule per diver rate (+Single Supplement Surcharge if applicable).



Deluxe Cabin D5: Twin Sharing
Maximum Number of Guests: 2 (two)
Mattress Size: 107 cm x 190 cm
Cabin Size (including WC/Shower): 10.8 sqm

Deluxe Single-Supplement is +80% of the cruise schedule rate.
Non-Diver Rate is -10% of the cruise schedule per diver rate (+Single Supplement Surcharge if applicable).



Deluxe Cabin D6: Twin Sharing
Maximum Number of Guests: 2 (two)
Mattress Size: 107 cm x 190 cm
Cabin Size (including WC/Shower): 11.8 sqm

Deluxe Single-Supplement is +80% of the cruise schedule rate.
Non-Diver Rate is -10% of the cruise schedule per diver rate (+Single Supplement Surcharge if applicable).

THE HOSPITALITY

Reading Library with a Loan & Exchange Program.

Entertainment onboard in the lounge there is available play-on-demand audio-video system with entertainment library and card games.

Types of Coffee Available onboard there is a fully automatic (self-service) pressed coffee machine, local and instant coffee.

Types of Tea Available onboard we stock Ceylon, Chamomile, Green and Chinese.

Drinking Water free flow from reverse osmosis water dispenser.

Alcoholic Beverages Available* an assortment of wine, and beer (no spirits), you may also BYO with no corkage charge. Kindly be aware that we reserve the right to impose if in excess of the duty-free allowance of one person.

Non-alcoholic Beverages subject to availability, popular selections include light and zero options.

Self Serve Snacks are available 24 hours.

Ice Maker available.

Special Dietary Requests with prior notice, we can cater to vegetarian and selective non-meat diets. However, for vegans, we kindly request advanced notice and a specific list of allowable ingredients for their meal preparation.

Souvenirs* Solitude Adventurer merchandise is available onboard. Local souvenirs can be purchased when we take you to the local shopping mall.

Onboard Guest Services* satellite internet and laundry services are available.

** are subject to additional costs*

ADVENTURER

