

Know Before You Go

Get ready to travel to Philippines.



SOLITUDE WORLD





Contact Us

address: MV Solitude One
phone: +65 8243 4548
emailus@solitude-liveaboards.com



Time Zone

Time Zone: GMT +8



Climate

Tropical Climate with an annual mean temperature of 27°C (82°F). Rain is frequent between the months of June to October. Periodic rain flashes do occur.



Water Temperature

Ocean temperatures in the Philippines range from 26°C to 29°C (81°F - 84°F).



Language

The official language is **Tagalog** in the Philippines, but English is also the working language of the country.



Currency

Philippine Peso (PHP) or United States Dollar (USD). Credit cards are widely accepted in the Philippines. Solitude One accepts Visa and Master cards only, a facility fee will be applied. Please inform us at least one night before disembarkation.

Philippines with Solitude One

We appreciate that you have selected Solitude World for your getaway, and we trust that this pre-departure guide will assist you in preparing for your vacation with us.

Pre-Departure Information

Here, we would like to offer some helpful tips to make your journey smoother, particularly if you will be transiting through Manila.

Location

Ninoy Aquino International Airport (NAIA) in Manila to Puerto Princesa International Airport.

Solitude Compulsory Forms

[Form A, Registration Form](#) and [General Liability Release Form](#). Please read, complete and send to us, prior to your departure.

Dive Insurance

This is compulsory for those that will be diving with us. If you have not already provided your details, please do so on arrival. You will need the following: the name of your insurer, the policy number, the emergency contact number and also any disclosed medical conditions you may have.

We also need your own personal emergency contact person back home – a friend or family member and their contact details.

Visa and Immigration

On your Philippines Immigration arrival form, please provide 'MV Solitude One' as your address in the Philippines. If you need to provide a contact number, you may use our Solitude Acacia Resort's office number: +68 077 091 98.

Visa exemption is granted to foreigners from 166 countries, entitling them to a [30-day Visit Stay Permit](#). It's important to note that a valid passport with a minimum validity of 6 months and at least 2 blank pages for visa stamp is required. To ensure a smooth arrival, please complete the [ETravel Registration](#) at least 72 hours before your arrival.

Visit the Philippine Embassy Site in your country for further information on current covid requirements and travel guidelines.

Tubbataha Visitor Entry Permit

Tubbataha is a no-take marine protected area governed by Republic Act 10067, also known as

Tubbataha Cruise Itinerary

the Tubbataha Reefs Natural Park Act of 2009. Violation of these rules and regulations is punishable by law. Before visiting Tubbataha, please read the TRNP Rules and Regulations and submit your acceptance via their e-form - [Tubbataha Protected Area Management Board Visitor Entry Permit](#).

NOTE: This currently also includes drone permit application **which must submitted 5 (five) days prior to arrival.**

Drones / AUVs / ROUVs

Tubbataha Marine Office (since 2016 season) [does not allow Drone/UAV flights](#) unless permission is granted. If you would like to bring your drone and fly it in Tubbataha Atoll, you will need to write in to request permission. Please view [Tubbatha Park Rules and Regulations](#) on how to process your Drone permit request.

The contact details of Tubbataha Management Office (TMO) are as follows:

Tel/Fax: +63 (48) 434 5759

E-mail: tmo@tubbatahareef.org

Please Note: Unfortunately, we cannot process or handle your drone request on your behalf. The responsibility and ownership of the permission, if granted, lie with the requester. Additionally, TMO may have questions for the requester.

Also, please be aware that there are reports circulating on online forums of potential "import duties" on drones/UAVs by Philippines Customs upon arrival at the airport. It is recommended to avoid bringing your drone/UAV to the Philippines to prevent any complications. We highly recommend that you conduct thorough research for more advice or information.

Postal Service

Postal services in the Philippines are handled by [PhilPost](#). Please be aware that items sent by couriers or international postal services are subject to Customs and Duties. We advise against sending anything to the Philippines via courier, as they often get held up by the Philippines Bureau of Customs for opportunities in collecting "taxes".



Wifi

Stay connected onboard with pre-purchase data packages. Contact our Reservations team or Cruise Director for current options and pricing.



Electricity

Universal power outlets are available onboard. The Philippines uses 220V, 60Hz power.



Lithium Battery Safety

Rechargeable lithium batteries used for diving, photography and recreational equipment are encouraged to be charged within designated charging areas such as the Camera Room.

For more information:

www.solitude.world/battery-safety-policy



Duty Free

1 Adult is allowed: 2 bottles, maximum 1 litre each of alcohol and no more than 400 sticks of cigarettes, 50 cigars or 250g (8.8 ounces) of tobacco.



Quick Travel Checklist

- Passport Validity (6+ Months)
- E-Travel Registration Completed
- Dive Insurance Arranged
- Tubbataha Visitor Permit Completed
- Drone Permit Approved (if applicable)

Arriving in Puerto Princesa

Welcome to Puerto Princesa! We look forward to having you onboard shortly.

Travelling to Puerto Princesa

For your cruise embarkation, it is recommended to arrive on the same day as the embarkation date. The ideal arrival time is between 14:00 to 17:00.

Puerto Princesa (IATA Code: PPS) is located on Palawan Island and serves as the primary airport. This means there are multiple airlines offering at least three daily flights, particularly from Manila or Cebu, which are two of the main international airports. If you are arriving in the Philippines through any other international airport or seaport, you should still be able to find flights to Puerto Princesa.

The main airlines that operate flights to Puerto Princesa are:

- [Philippines Airlines/PAL Express](#)
- [Cebu Pacific Air](#)
- [AirAsia](#)

Flight Recommendations

note before: Kindly refer to the airlines' latest schedules for accurate information at the time of your booking.

As of February 8, 2017, the arrival flights from Manila to Puerto Princesa are as follows: Cebu Pacific 643, Philippines Airlines 2785, and AirAsia 430.

For the recommended departure flights from Puerto Princesa to Manila (as of February 8, 2017), we suggest considering Cebu

Pacific 644, Philippines Airlines 1198/2786, and AirAsia 431.

Airport Meeting Point

Depending on your flight arrival time, our staff will either meet and collect you from the airport or your hotel. If you need to locate our crew or contact the vessel, please reach out to the Cruise Director directly at **+63 995 101 7402**.

After collecting your luggage and exiting the passenger area into the public area, one of our staff will be waiting to greet you. Please look for the **SOLITUDE LIVEBOARDS** paging board held by a crew member (we do not employ third-party representatives). If you are unable to locate our crew, kindly contact the Cruise Director for assistance.

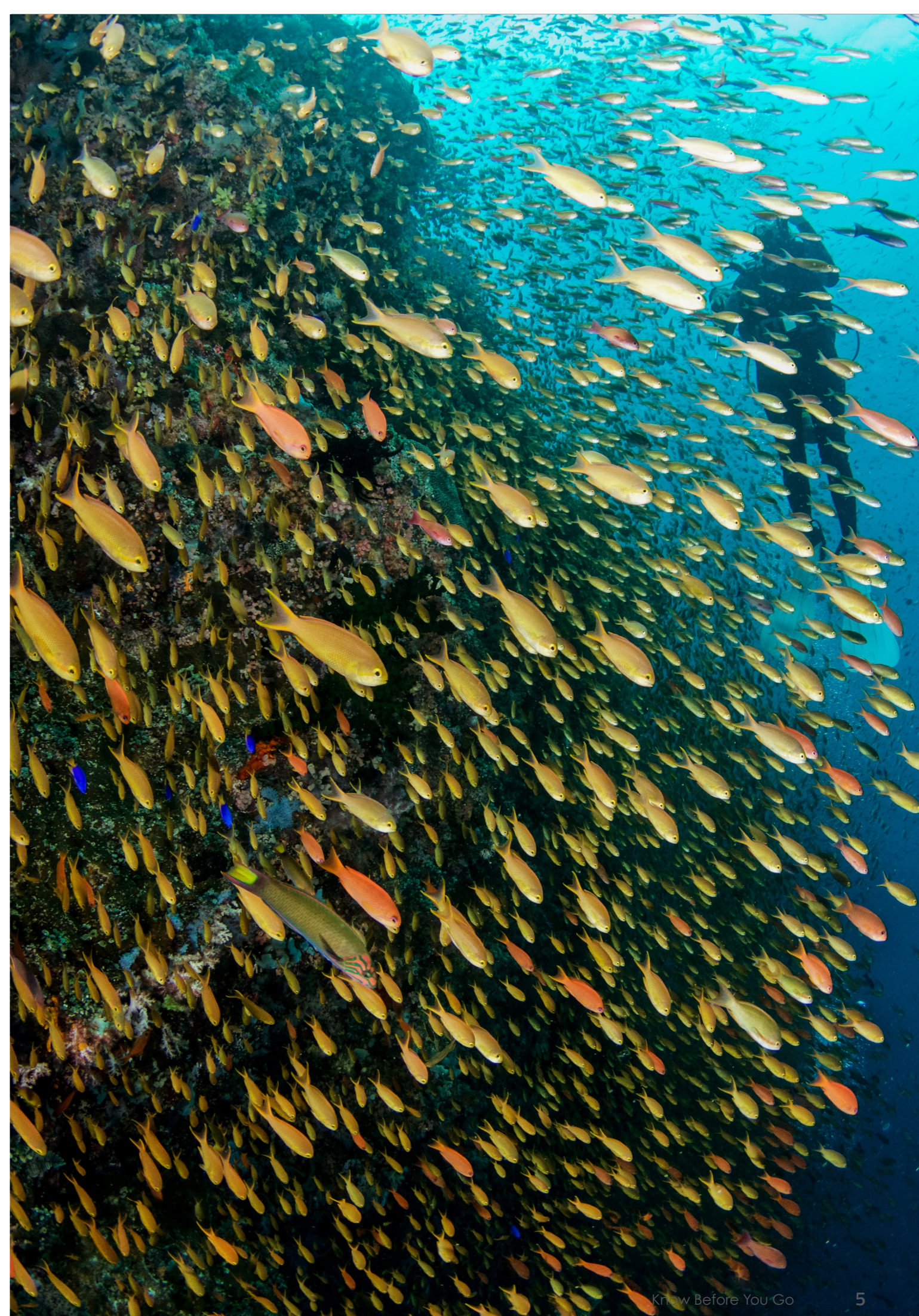
Friendly Reminder

We do not offer currency exchange services or accept foreign currency as payment at our liveaboard. We only accept payment in PHP or USD cash or major credit cards such as Visa and Mastercard.

For your convenience, currency exchange services are available at international airports, or you can utilize local ATMs with your debit/credit card to withdraw PHP on your way to the ship.

Paging Board

To help identify our friendly airport transfer staff, please look for the SOLITUDE LIVEBOARDS paging board with your name.



Checking in at NAIA



Special Mention

Navigating between terminals at the Ninoy Aquino International Airport in Manila can be a challenging experience, so it's crucial to confirm which terminal you will be arriving at or departing from. This will help you prepare for your transit and avoid potential frustration and delays.

Terminal 1, 2 and 3: International and Domestic

Terminal 4: Domestic Only



Airport Transfers

If you find yourself arriving and needing to switch terminals to catch your domestic flight to Puerto Princesa (or Cebu), here are some options for you:

1. It is recommended to use the free Terminal Transfer Service (Bus). If you are unable to locate the sign indicating where to catch the bus, kindly ask for directions. Although the bus service is not frequent, it is the most convenient way to reach your terminal. Be sure to join the queue, as the bus has limited space, and missing it means waiting for another 30 minutes. Also, remember to ask the warden or bus driver for assistance.
2. To get a taxi, find the yellow metered and airport-accredited taxi counter and inform the staff that you're going to Terminal 1. Terminal 3 is the farthest and can take 60-90 minutes, while Terminal 2 is the closest but can still take 30-60 minutes due to traffic. Taxi fares may vary depending on traffic and terminal, but yellow taxis are slightly more expensive than regular white taxis. Ensure the meter is on, and for group travel, only two people can fit in one taxi with luggage. Expect to pay no more than PHP250.



Airport Passenger Terminal Fees / Taxes

It is now included when you purchase your air tickets,

Domestic Excess Check-In Luggage Fees

Most of the Airlines charge in the region of PHP200 per KG. Please check with the airlines on their respective websites to obtain the most current information.

Puerto Princesa: Hotels

If you are planning to arrive earlier or extend your stay due to flight constraints, here are some suggested hotels, in no particular order:

- Alvea Hotel
- Aziza Paradise Hotel
- Best Western Plus The Ivywall Hotel
- Canvas Boutique Hotel
- FERSAL HOTEL Puerto Princesa
- Hibiscus Garden Inn Hotel
- Hotel Fleuris Palawan
- Munting Paraiso
- One Manalo Place
- Princesa Garden Island Resort and Spa
- Sheridan Boutique Hotel
- Wanderlust Bed & Breakfast

Please note that Solitude is unable to assist with hotel bookings. You can make your reservations through your dive or travel booking agent or by using various online hotel booking websites.



Embarkation

Embarkation for an exciting adventure aboard Solitude One begins at 14:00! We can't wait to welcome you on board. Our embarkation and disembarkation point is the [Puerto Princesa Port](#) (click for google map), where the journey of a lifetime awaits

Get ready for an incredible experience as we commence your adventure on Solitude One.



Philippines

Safety

Ensuring safety has been our top priority at Solitude World since the beginning. We recognize the importance of having well-trained crew and being well-equipped to handle any situation, especially given the remote areas we operate in.

Our Top Priority

Safety is our top priority. Operating in remote locations, we are equipped with comprehensive emergency, fire safety, navigation and communication systems. A complimentary Nautilus Marine Rescue GPS is provided for all divers.

Key Safety Features

- Fire extinguishers and fire suppression systems
- EPIRB, life rafts and emergency survival equipment
- VHF radios, Garmin inReach, Inmarsat-C and Starlink
- GPS chart plotter, radar and weather monitoring systems
- Fresh water storage and onboard water-makers

Additional fire prevention measures, including lithium battery charging and storage procedures, form part of our onboard safety practices.

For more information, visit: <https://solitude.world/battery-safety-policy>



Safe Diving

We understand that your time and investment in a holiday are valuable, and we aim to provide you with as many dives as possible while ensuring your safety.

In order to prioritize safety, it is important to make sure you maintain proper rest and hydration during your diving adventure.

We recognize that although you have learned about safety during your scuba course/s, the excitement and anticipation of a diving holiday can sometimes cause us to neglect our own readiness for a dive.

Our crew's safety is also important, so we limit the number of dives to four per day, including a night dive, to minimize fatigue and reduce the risk of accidents.

Itineraries are subject to change due to weather and logistics, but our cruise directors will keep you informed.

What to Know On Board

Please note that your chosen package excludes certain expenses like Equipment Rentals, Satellite Communications, EANitrox, Alcohol, Laundry Service, Marine Park Fees, and Local district administration permits. Some fees collected at **check-in** and the rest at **check-out**.



Your Cabin

Amenities

In-room amenities consist of air-conditioning, a wardrobe, an electronic in-room safe, an ensuite bathroom with a toilet and shower, a hair dryer and shower amenities.

Daily cabin cleaning is provided, while sheets, bath and face towels are changed every three days of use. Nevertheless, you may request a change at any time if needed.

You can find more about your [cabin type here](#).

Check-Out

Fuel Surcharge, Laundry, Bar, Satellite Usage fees, EANitrox and other incidentals will be paid at check out.



Mode of Payment is in PHP or USD cash or Credit Card Visa/Master Card only. There is an applicable facility fee charge.

Required On Board Payments

During **check-in**, you will be required to pay for Marine Park Fees and Local Barangay permits, while other incidental expenses will be charged at check-out. The following is an overview of some of the regions' fees, which are subject to change:

- Tubbataha Marine Park Fee: PHP5000 per person
- Sumilon Island: PHP350 per person (PHP500 if using photo/video equipment)
- Oslob Whaleshark Sanctuary: PHP1500 per person
- Apo Island (off Dumaguete): PHP500 per person/per day
- A **fuel surcharge** may apply based on the 30-day average price of Brent Crude prior to embarkation. If the average exceeds USD70 per barrel, a surcharge of USD30 per person per night applies. If the average reaches or exceeds USD100 per barrel, the surcharge increases to USD50 per person per night.

The surcharge, if applicable, is payable onboard during embarkation and may be waived at Solitude's discretion if the 30-day average remains at or below USD70 per barrel. Brent Crude pricing is publicly available at Investing.com Brent Crude Historical Data: <https://www.investing.com/commodities/brent-oil-historical-data>

Kindly refer to our [booking terms and conditions](#) in order to determine whether the Fuel surcharge is applicable to your cruise.

You can use an existing permit if it is still valid until the end of your itinerary. Please note that all permits and taxes should be paid during the welcome briefing on board and are subject to change. However, the most up-to-date information will be provided within a month before the cruise embarkation.

We wish you a delightful and enjoyable stay with us.

Incidentals

Special Diets

Kindly inform us in advance of any special dietary requirements you may have. This is essential for us to accommodate your needs, as sourcing certain items can be challenging at different times of the year. If you have a medical dietary condition, please consider bringing your preferred alternative products, such as gluten-free pasta or soy milk.

The Bar

Our bar offers a carefully curated and limited selection of wines, cocktails, spirits, and beers.

BYOB

Guests are welcome to bring alcoholic beverages on board, especially those within the duty-free allowance from international travel. These may be enjoyed alongside the complimentary non-alcoholic drinks available during your stay.

If you'd like your preferred beverages stocked in advance (subject to availability and possible charges), let us know before your trip. Locally purchased alcohol should be limited to 1 litre and not duplicate what's available for sale onboard.

Our beverage prices are kept fair for your convenience—because with all your dive gear, we know you've already got enough to carry.

Laundry Services

Laundry service is available. You will

discover a laundry bag containing a list of items and associated charges within your room.

Entertainment

Onboard, there is a diverse range of multimedia content, books and board games to keep you entertained during your down time.

Mobile SIM

Pre-paid SIM cards, including Globe, are available for purchase at the airport right after baggage collection. Salespeople can assist with package setup. Please be aware that, mobile data is reliant on the mobile signal of your chosen provider and there will be no mobile signal at sea in Tubbataha.

Phone Calls, SMS and Emails

If you need to locate our crew or contact the vessel, please reach out to the Cruise Director, Mitch Ejercito directly at **+63 995 101 7402**.

Wifi Tips

To optimise your experience with our Starlink Internet service and manage data effectively, we highly recommend adjusting your device settings. Our crew is available to assist with these adjustments.

To make the most of the satellite connection, we suggest keeping messages concise and using abbreviations where possible to minimise data usage. Additionally, please disable automatic updates

and syncing on your devices to conserve data. Setting the onboard Wi-Fi SSID as "metered" will signal your device to limit data usage.

Please note that Solitude One is not liable for any outcomes related to the use or non-use of satellite communications, including hardware issues. As connectivity depends on a third-party provider (Starlink) and can be affected by weather, Solitude One, her crew, and management are not responsible for any resulting inconveniences, losses, or service disruptions.

Social Media

We encourage you to share your encounters with the fascinating ocean life you'll undoubtedly encounter, as well as your enjoyable experiences with us. Feel free to tag, follow, like and share us on social media platforms:

Instagram:

[@solitude.world](#)

Facebook:

[@solitudeliveboardsandresorts](#)



Scuba Diving

Throughout the week, you may need to rent dive equipment, purchase additional dives, or switch to EANitrox. These additional expenses will be added to your account and settled during **check-out**.



Digital Studio

Amenities

- 2 VERY Large Rinse Tanks and Towels just for Cameras
- Pressurised Air for Drying
- Camera Setup Bench on Dive Deck
- Digital/Camera Studio: 2 PC Desktop stations available for guest use
- Universal Power Socket. Studio Power Type: 200V-220V/50Hz
- Surge Protection and UPS Sockets, only in Digital Studio
- Electrical Plug Adapters and Extensions available

Lithium Battery Safety

Rechargeable lithium batteries used for diving, photography and recreational equipment must only be charged within designated charging areas.

For more information, visit:

www.solitude.world/battery-safety-policy

Dive Days

Solitude One navigates the Philippine seas from April through September or October.

The diving schedule is confirmed nightly and solo diving is not permitted. Dive sessions last for 60 minutes, followed by surface intervals back at the ship.

It's advisable to wear either a full-length 3mm wetsuit or a 5mm suit if planning multiple dives. The region has a tropical climate, maintaining an average annual temperature of 28°C

(82°F). Rainfall is common between July and October.

Water temperatures, typical of tropical nations, range from 27°C to 29°C (81°F - 84°F), occasionally influenced by thermoclines due to the surrounding ocean trenches in the Philippines.

For your peace of mind we do provide a complimentary [Nautilus Marine Rescue GPS](#). Please Note, that if you use the Nautilus Rescue Device, you are responsible for replacing it if lost or damaged.

Dive Centre

1	EANitrox prices are as follows: USD8 per dive OR USD135 for 7 days/6 nights Philippines itinerary, with subsequent additional use US \$20 per day	Yes
2	100 cu.ft. / 15L cylinders - additional charge USD10 per cylinder per diving day (pcpdd)	Yes*
3	Side mount support - additional 12L/80cu.ft. cylinder and twin tank 12L/80cu.ft. available. Air USD10, EANitrox USD28 pcpdd. Whole trip use: 10% discount applies	Yes*
4	DIN valves with option of Yoke (A-clamp)	Yes
5	Rebreather diving costs only USD0.06 per litre* for oxygen filling. Dive profiles must consider other guests' comfort and safety. Complete support, including Twin Tank configurations, is available for full charters. Helium, if required, may be costly. Full charter profiles are not limited to standard recreational limits.	Yes
6	Rental gear available	Yes*
7	Private Guide Service is available for USD150 pdd.	Yes*

* Subject to availability/change



YES%

Enriched Air Nitrox

For safety reasons, we typically provide EAN mixes of around 30% to 31%, which allows for a safer Maximum Operating Depth and ample bottom time. Our all-inclusive diving package can include EAN use, proof of EAN certification is required without exceptions.

Dive Shop

On-board, you can purchase Surface Marker Buoy (OPV, SOLAS Reflector), Nautilus Lifeline GPS/VHF Radio (with Pouch), Spools, Dive Pointers, Drift Hooks, o-rings, Hoses, and other common replaceable spares. We recommend placing an advance order, as quantities are limited.

Prior to diving, it is mandatory to present proof of certification and dive insurance.



Disembarkation

The disembarkation day marks the end of our trip, and it's always bittersweet to say goodbye to our new friends. Even though this is a NO DIVE DAY, we strive to make this last day a memorable and enjoyable experience for everyone.

Disembarkation is scheduled for 11:00. During 07:00 to 08:00, you will receive a briefing on your bill and payment options during the check-out process. We accept cash in USD, PHP or credit card payments (please inform us in advance if you plan to use a credit card, and note that a facility fee applies). We would appreciate all accounts to be finalised by 09:30.

After a hearty breakfast there will be an appreciation briefing followed by final disembarkation for out guests.

Unfortunately, we are unable to accommodate late check out requests as we have to prepare for the next cruise.

More Information

whatsapp: +65 8243 4548

emailus@solitude-liveaboards.com

Vessel Data Sheet

[Solitude One Vessel Data Sheet](#)

For more details about the vessel, cabins, facilities and amenities.



Reference Sheets

[How to Contact Solitude One](#)

[About Our VSAT Internet](#)

For instructions and how to.

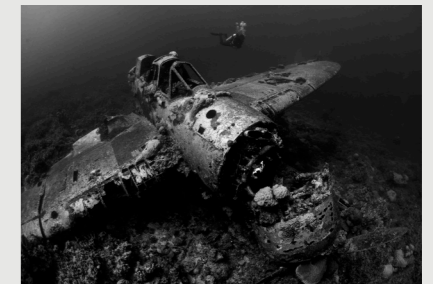


Compulsory Forms

[Form A, Registration Form](#)

[General Liability Release Form](#)

Compulsory for all guests.



Gratuity / Tips

Throughout your stay, our dedicated staff and crew are fully committed to ensuring you have a fantastic Solitude experience, and while gratuities are not expected, they are sincerely appreciated. They recognise the collective teamwork, even from those working behind the scenes, and distribute all tips equally. Should you wish to show your appreciation, a recommended gratuity of 5% to 10% of the total stay cost is suggested. Of course, if you wish to express your appreciation with a higher amount, you are more than welcome to do so.





www.solitude.world

MV Solitude One
Philippines

Telephone: +68 077 091 98
emailus@solitude-liveboards.com