

SOLITUDE GAIA

liveboards • Maldives

Cruising August 2027



DATA SHEET

Note: Image shown is a concept render.
Final design and details may differ once construction is complete



ABOUT

INTRODUCTION

Introducing Solitude Gaia Maldives, the first vessel within the Solitude Liveaboards and Resorts fleet to be designed through full collaboration from the very beginning.

Every aspect of Solitude Gaia Maldives has been shaped by years of hands-on experience across our liveaboards and resorts, drawing directly from guest feedback, crew insight and operational learning gathered over time. The vessel represents a collective refinement of what works at sea, informed by real journeys, real conditions and the people who live and work on board.

Designed for extended exploration across the Maldivian archipelago, Solitude Gaia Maldives supports steady seakeeping alongside thoughtfully arranged living spaces. From its earliest planning stages, the focus has been on balance, flow and comfort, allowing days to unfold naturally between diving, rest and time spent on the water. The vessel is being built in accordance with RINA Class standards, a member of the International Association of Classification Societies (IACS), reflecting a commitment to recognised international benchmarks for safety and construction.

Interiors are guided by organic materials and refined textures. Pottery elements, warm wood finishes and stone-inspired surfaces sit within an earthy, natural palette, accented by soft sea-green tones that reflect the surrounding ocean. The atmosphere is calm and grounded, creating spaces that feel settled and restorative rather than overstated.

Across four deck levels, the vessel supports a natural daily rhythm. Dive operations, communal areas and private cabins are arranged with clarity and flow, allowing guests to move easily between activity and rest throughout the journey.

Solitude Gaia Maldives is scheduled to commence operations in 2027, offering a rotating selection of itineraries across the Maldives.

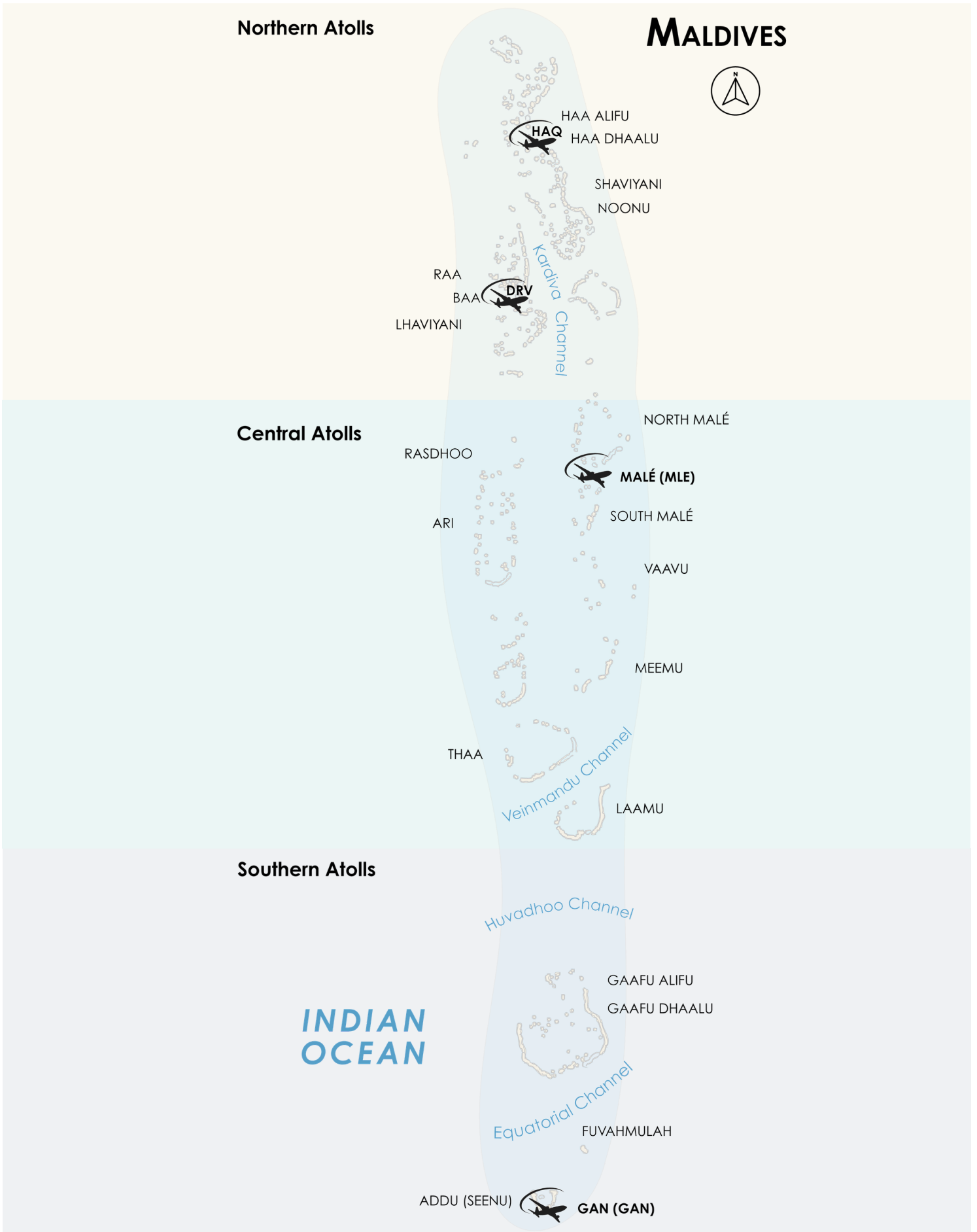
Please refer to the schedule availability link below.

THE RATES

Rates and Itineraries to be released 2026,
subscribe to stay updated. www.solitude.world
or emailus@solitude.world.

SOLITUDE

DESTINATIONS



VESSEL FACTS

Type and Year Built Steel Mono-Hull with aluminium superstructure, launched in 2027.

Port of Registry/Flagged TBC

Cruising Itinerary Routes Maldives

Gross Registered Tonnage 471t

Length 40m (meters) **Beam** 10m **Draft** 2.3m **or Length** 131ft (feet) **Beam** 33ft **Draft** 7.5ft

Deck Levels 4 levels

Solitude Gaia Maldives is being built to support extended-range cruising, operational stability and guest comfort across remote Maldivian itineraries.

NOTE: More vessel specifications will be added or updated once the RINA Class review process has formally commenced.

Alfresco



Note: Image shown is a concept render. Final design and details may differ once construction is complete

G A I A Maldives

THE DIVING

Dive Skiffs there are two purpose-built boats, one aluminium skiff and one dhoni.

Support Skiff purpose-built.

Air Compressors 3 x Bauer Poseidon compressors

Nitrox Membrane System Aaragon

Dive Guides ratio 1 to 6 divers. Private guide service is available for USD150 per diving day (pdd).

Dive Equipment Rental is available, which includes dive computers, but underwater cameras are not included.

Surface Marker Buoy (SMB), Lead Weights & Belt are complimentary but responsible to replace if lost or damaged

Enriched Air Nitrox Diving EANx 28 to 32%, to provide a more suitable M.O.D for divers

Scuba Cylinders are available in a range of DIN sizes (yoke adaptors available). Twin tanks are not available and the setup is side-mount friendly. Avelo systems are intended, however their use is subject to Maldivian regulations, which currently require divers to use a BCD.

Rebreather Support only on full charters with rebreather divers. Organising scrubbers requires advanced notice of 180 days or more, although there is no guarantee. Alternatively, you have the option to order and send them to us. It's important to note that oxygen supply in the Maldives is both limited and costly.

Medical Oxygen and Comprehensive First Aid Kits are available

FOR YOUR SAFETY

NO SOLO diving is allowed, even if you are certified.

It is mandatory for **ALL** guests engaging in scuba activities to have an audible signalling device (such as a whistle), a dive computer, a surface marker buoy, appropriate dive insurance coverage, a valid dive certification, and have completed waiver Form A and Form C for the activities.

SOLITUDE

DIGITAL AREA

Large Camera Rinsing Tanks rinse tanks with air-gun and towels just for cameras.

Pressurised Air for drying is available.

Camera Setup Bench, Editing and Charging Stations are available.

Universal Power Sockets are available.

Power Type 200V-220V/50Hz

Surge Stabilisation and UPS Sockets are available throughout the Digital Area.

Electrical Plug Adapters and Extensions are available.

E6 Photo Processing is not available.

Rechargeable lithium batteries used for diving, photography and recreational equipment are encouraged to be charged within the Digital Area wherever possible. Power banks brought on board must be declared to the crew and stored in designated battery safety containers. Further information is available at www.solitude.world/battery-safety-policy.

SOCIAL MEDIA

We encourage you to share your encounters with the fascinating new critters you'll undoubtedly encounter, as well as your enjoyable experiences with us. Feel free to follow, like and tag us on social media platforms:

Instagram

[@solitude.world](https://www.instagram.com/solitude.world)

Facebook

[@solitudeliveboardsandresorts](https://www.facebook.com/solitudeliveboardsandresorts)

Sundeck



Note: Image shown is a concept render. Final design and details may differ once construction is complete

G A I A

Maldives

THE CABINS

Solitude Gaia Maldives offers 10 cabins shaped by a design approach that places comfort, materiality and flow at its core. The cabins are arranged with mirrored balance, creating visual harmony and a sense of continuity across the vessel.

Each space has been conceived as a personal retreat within a life lived close to the water. Natural textures, refined finishes and an earthy palette softened with sea-green accents establish a calm, restorative atmosphere. Light enters deliberately, enhancing openness while preserving privacy and quiet.

Between dives and days on deck, the cabins provide a place to slow the pace. Climate control, generous en-suite bathrooms and thoughtful storage support ease and practicality, allowing guests to settle in fully and carry the rhythm of the sea into moments of rest.

OVERVIEW

10 Cabins in Total

- **Upper Deck | 2 Stateroom cabins:** 2 x Staterooms (2 Twin or Double Sharing) with private balcony
- **Main Deck | 8 cabins:** 6 x Deluxe Cabins (2 Twin or Double Sharing), 2 x Deluxe Cabins (Double Sharing)

Mattress Sizes

- Double /Twin share 202cm x 204cm
- Single 101cm x 202cm

Bathroom

Every cabin and stateroom on board is equipped with an en-suite shower (providing both hot and cold water) and a WC featuring a common water-flush system.)

Cabin Comforts

- Individual air conditioning system with climate control
- A safe deposit box
- Bathrobes, face and bath towels
- Hair dryer
- Body wash, Shampoo and Conditioner
- Bedding including pillows, duvet, and sheets. Extra pillows and light blankets are available on request
- Wardrobe organiser with ample hangers
- Desk with universal electrical points conveniently located for gadgets

En-suite Shower and Toilet

The cabin en-suite showers and toilets are thoughtfully designed to cater to the needs of modern-day users. While the size may vary depending on the cabin category, even the most compact cabins provide sufficient room, shelving, and space to accommodate your personal toiletries. All en-suite facilities are equipped with the following amenities:

- Manual bidet gun
- Separate shower
- Ample shelves/countertop and robe hooks

Housekeeping Practice

Cabins are cleaned daily. Sheets, bath and face towels are changed every 3 days of use. However, please feel free to request a change at any time when necessary.

UPPER DECK



Stateroom with private balcony

Cabins 301 and 302:

Twin or Double
Sharing

Maximum Number of Guests:

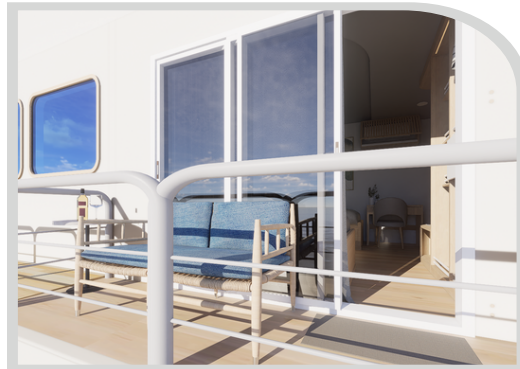
2 (two)

Mattress Size/s:

101cm x 202cm or
202cm x 204cm

Cabin Size (including WC/Shower): 19sqm

Stateroom Single-Supplement: +60%



Stateroom Balcony

MAIN DECK

Deluxe

Cabins 201 to 206:

Twin or Double
Sharing

Maximum Number of Guests:

2 (two)

Mattress Size/s:

101cm x 202cm or
204cm x 202cm

Cabin Size (including WC/Shower): 19sqm

Deluxe

Cabins 207 and 208:

Double Sharing

Maximum Number of Guests:

2 (two)

Mattress Size/s:

204cm x 202cm

Cabin Size (including WC/Shower): 16sqm

Single-Supplement: +60%

Note: Cabin ID renderings to be added soon. Final design and details may differ once construction is complete



THE HOSPITALITY

Alcoholic beverages are available for purchase on board and may include beer, red, white and rose wines, along with a selection of popular spirits. Assistance with personal alcohol purchases is not provided, as onboard beverage sales are available.*

Dining is offered in a flexible format combining buffet service with a la carte options, allowing meals to flow naturally around daily dive schedules.

Drinking water is provided free flow from a potable water dispenser with additional multi-stage filtration and is available throughout the vessel.

Entertainment onboard includes audio and visual systems available across cabins and shared spaces, including the lounge and dining areas. These spaces support briefings, presentations and relaxed viewing. Cards and board games are also available for casual leisure between dives.

Laundry services are available on board.*

Non-alcoholic beverages are offered subject to availability and may include light and zero options, as well as tonic and soda water.

Self-serve snacks are available 24 hours a day. An ice maker is available for guest use.

Special dietary requests can be accommodated with prior notice for vegetarian and selective non-meat diets. For vegan diets, guests are kindly requested to provide advance notice along with a specific list of suitable ingredients to assist with meal preparation.

Souvenirs may be available during select shore visits, depending on itinerary.

Tea, coffee and non-alcoholic beverages are available throughout the day. Coffee service includes a self-service ground coffee machine alongside local and instant options. A standard tea selection is maintained, which may include chamomile, English breakfast, ginger, green and Chinese teas, subject to availability. Non-alcoholic beverages may include light and zero options, as well as tonic and soda water, subject to availability

Wellness and spa services are available on the sundeck, offering guests a quiet space for relaxation and personal time during the voyage. Services are offered by appointment.*

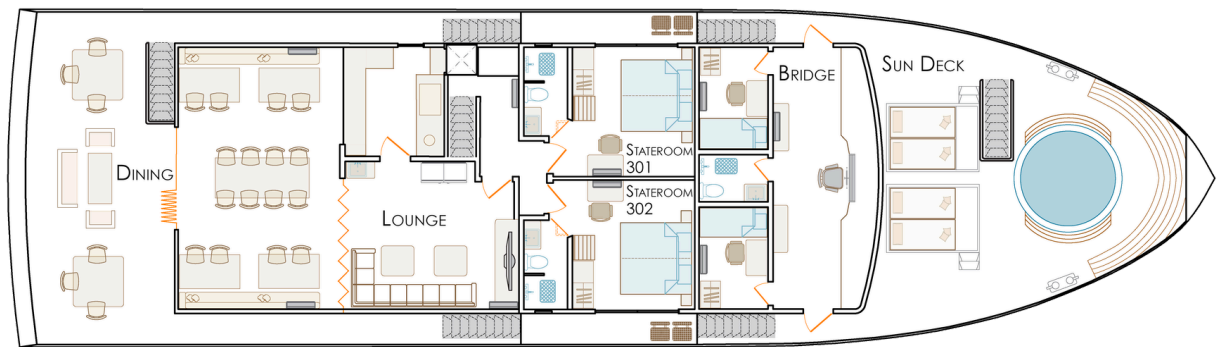
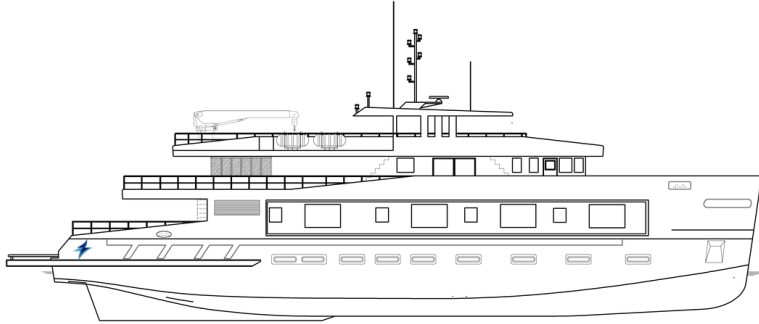
WiFi is available on board via satellite internet. Mobile network coverage is available in many areas of the Maldives but may be intermittent depending on location.*

* Items and services marked with an asterisk are subject to additional cost.

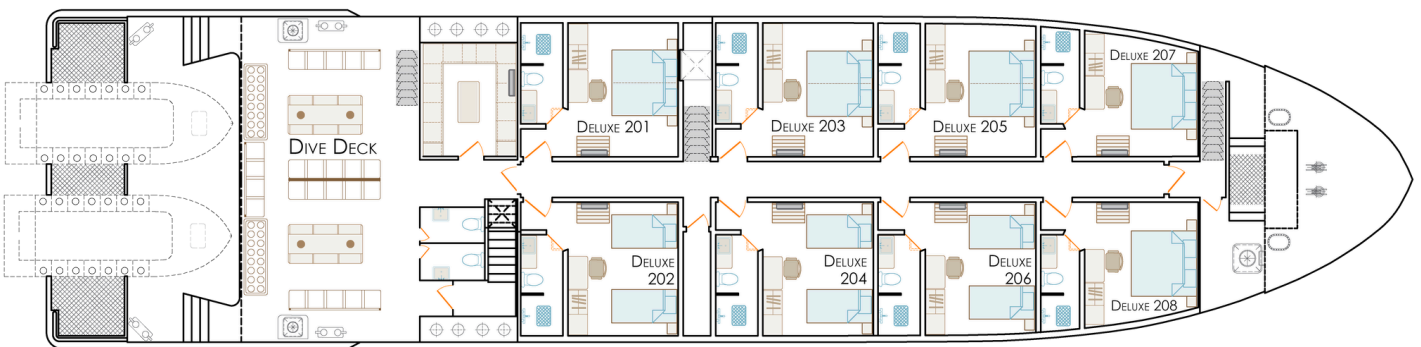
Bridge Sundeck

SOLITUDE

THE FLOOR PLANS



UPPER DECK



MAIN DECK

Note: Final vessel layout and design details may differ upon completion of construction.