

# SOLITUDE GAIA

liveboards • Palau



## DATA SHEET



# ABOUT

---

## INTRODUCTION

Introducing the Solitude Gaia Palau – a scuba diving liveaboard that transforms the core experience of exploring and adventuring on the open ocean. Completed in the year 2023, this vessel, stretching an impressive 40 metres in length, is more than just a ship; it's a testament to innovation and meticulous craftsmanship. With a robust steel hull, it stands as a symbol of stability, ensuring your safety and peace of mind throughout your diving journey. But that's not all; the Solitude Gaia Palau's aluminium superstructure adds a unique touch, not only contributing to its stability but also lowering the centre of gravity for an even more secure and comfortable voyage.

What sets the Solitude Gaia Palau apart is not just its structural excellence but also its deep commitment to creating an environment where guests can truly feel at home. Designed to meet the highest standards of the classification society BKI and the stringent requirements for a passenger ship, it was crafted with the intent to share the profound passion and wonder of the world beneath the ocean's surface.

Stepping on board, you'll find that the Solitude Gaia Palau exudes a feel and vibe that inspire freedom of the mind and a sense of openness. It encourages reflection on the timeless virtues that guide our lives: humility, charity, chastity, gratitude, temperance, patience, and diligence. These virtues are not just words; they are embedded in the very essence of the vessel, shaping your experience.

The curated décor, with its soothing neutral tones, offers a space that exudes consideration, intent, comfort, elegance, and a subtle touch of luxury. It's a deliberate choice, designed to reinforce gratitude and appreciation for the remarkable world that lies beneath the waves.

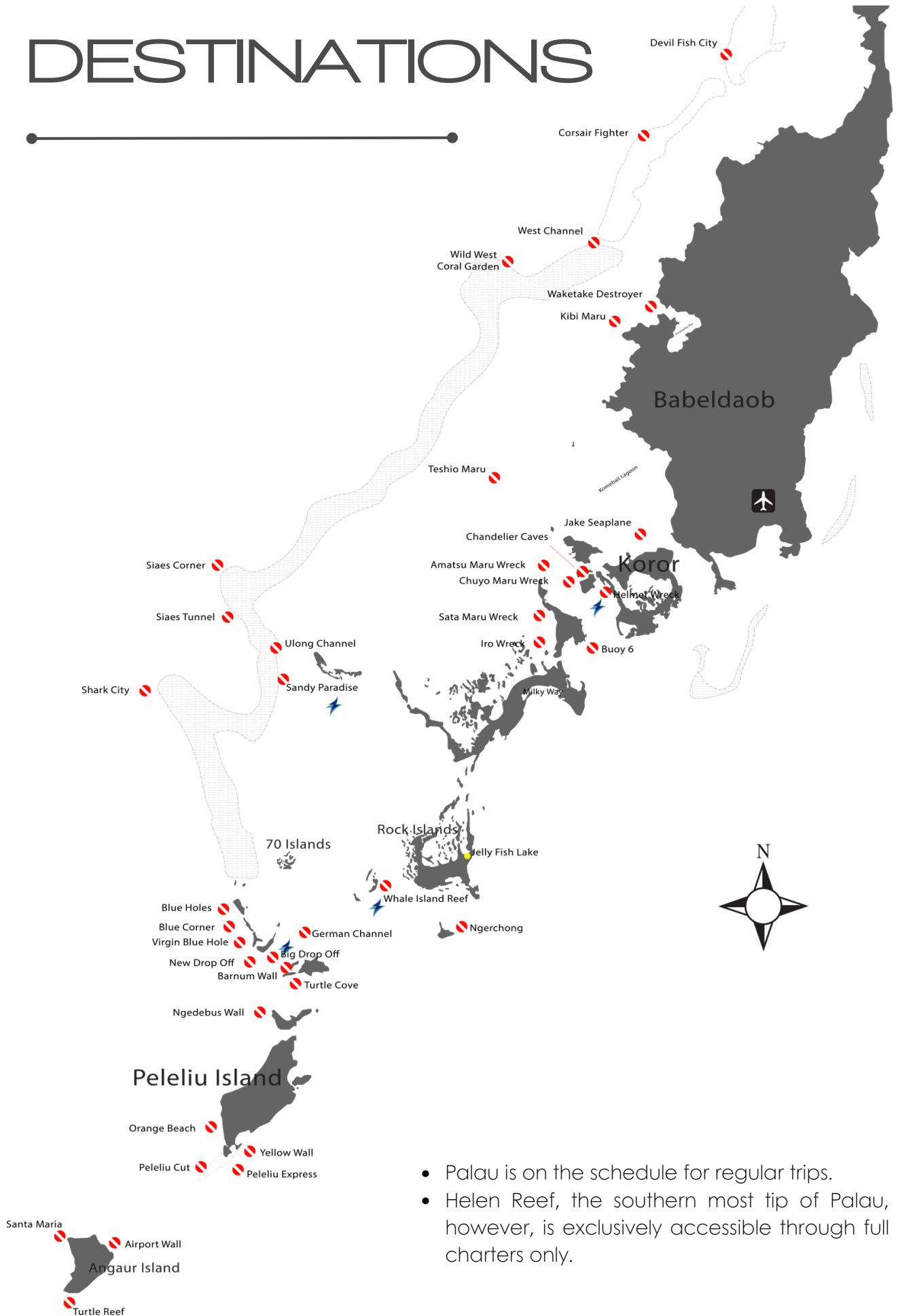
With a cruising speed of 10 knots, Solitude Gaia Palau offers a sense of serenity and adventure combined. It boasts nine cabins and a sumptuous spa suite, ensuring the utmost comfort for up to 18 guests. As you embark on your scuba diving journey aboard this remarkable vessel, you'll not only explore the ocean's depths but also embark on a voyage of self-discovery, where the virtues of the sea and the vessel itself converge to create an experience like no other.

## THE RATES

Please refer to schedule availability information on [www.solitude.world](http://www.solitude.world) or [emailus@solitude.world](mailto:emailus@solitude.world) for cruise itineraries of Palau and the Philippines.

# SOLITUDE

# DESTINATIONS



- Palau is on the schedule for regular trips.
- Helen Reef, the southern most tip of Palau, however, is exclusively accessible through full charters only.

# VESSEL FACTS

---

**Type and Year Built** Steel Mono-Hull with aluminium superstructure, launched in 2023.

**Port of Registry/Flagged** Koro, Palau

**Cruising Itinerary Routes** Palau

**Gross Registered Tonnage** 471t

**Length** 40m (meters) **Beam** 9m **Draft** 2.3m **or Length** 131.24ft (feet) **Beam** 29.53ft **Draft** 7.55ft

**Cruising Speed** 10 Knots with top speed 14 Knots

**Diesel Capacity** 62,256L (16,459.25 US Gal.)

**Cruising Range** is approximately 4150 nautical miles (7,685km) - with allowances made for weather and variations in manoeuvrability.

**Engine & Propulsion** twin Yanmar engines 829 HP @ 1900 RPM.

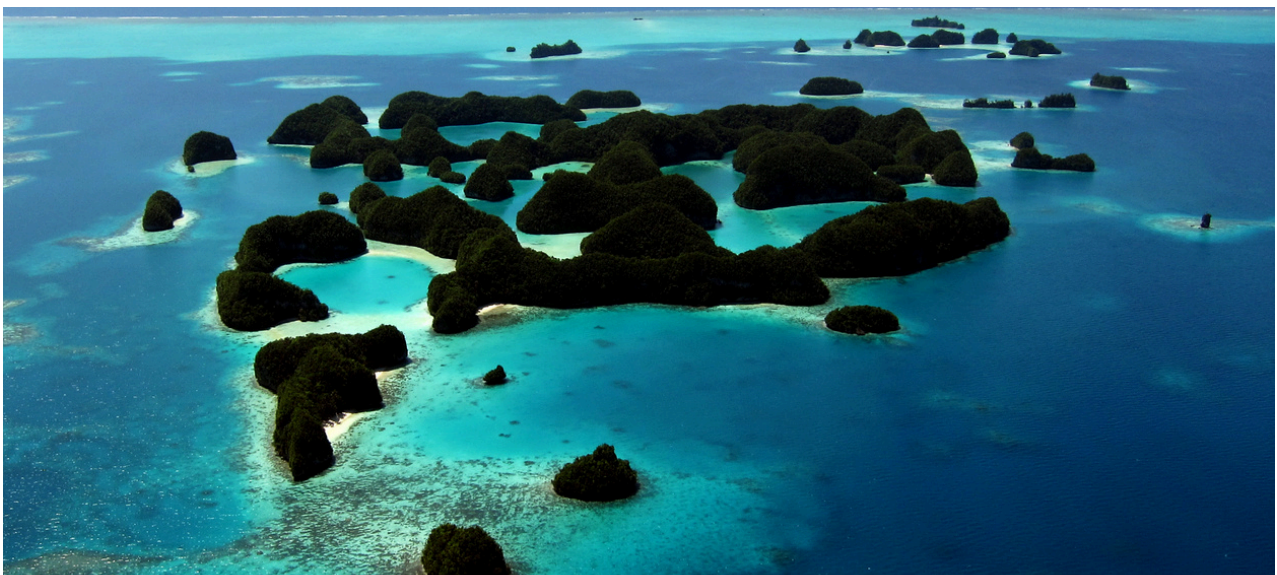
**Electricity** (2 x BAUDOIN 6W105S RATED 107KW- 1500RPM) and (1 x WEICHAI WP4CD66E200 50KW/62.5KVA 3PH 50Hz)generators providing 24 hours of 200V to 240V - 50Hz power.

**Navigation** equipped with local navigation maps, GPS chart plotter, radar (long/short range), weather plotter, and depth sounder.

**Communication System** VHF/SB radios, VSAT satellite phone & internet

**Ship Safety System** GMDSS with EPIRB, AIS, life rafts, emergency survival packs, and a semi-automated fire suppression sprinkler system.

**Fresh Water Capacity** 63,086L (storage) with 3 onboard water-makers each capable of producing 280L of fresh water per hour.



G A I A

# THE DIVING

---

**Dive Skiffs** there are two purpose-built aluminium boats measuring 6m each, equipped with single 100HP outboard engines.

**Support Skiff** purpose-built fibreglass boats measuring 6m, equipped with single 100HP outboard engines.

**Air Compressors** 3 x Bauer Poseidon compressors

**Nitrox Membrane System** Aaragon

**Dive Guides** ratio 1 to 6 divers. Private guide service is available for USD150 per diving day (pdd).

**Dive Equipment Rental** is available, which includes dive computers, but underwater cameras are not included.

**Surface Marker Buoy (SMB), Lead Weights & Belt** are complimentary but responsible to replace if lost or damaged

**Enriched Air Nitrox** Diving EANx 28 to 32%, to provide a more suitable M.O.D for divers

**Scuba Cylinders** of various DIN sizes (York Adaptors available). Twin tanks are not available, side-mount friendly.

**Rebreather Support** only on full charters with rebreather divers. Organising scrubbers requires advanced notice of 60 days or more, although there is no guarantee. Alternatively, you have the option to order and send them to us. It's important to note that oxygen supply in Palau is both limited and costly.

**Medical Oxygen and Comprehensive First Aid Kits** are available

## FOR YOUR SAFETY

**NO SOLO** diving is allowed, even if you are certified.

It is mandatory for **ALL** guests engaging in scuba activities to have an audible signalling device (such as a whistle), a dive computer, a surface marker buoy, appropriate dive insurance coverage, a valid dive certification, and have completed waiver Form A and Form C for the activities.

# SOLITUDE

# DIGITAL AREA

---

**Large Camera Rinsing Tanks** rinse tanks with air-gun and towels just for cameras.

**Pressurised Air** for drying is available.

**Camera Setup Bench, Editing and Charging Stations** are available.

**Universal Power Sockets** are available.

**Power Type** 200V-220V/50Hz

**Surge Stabilisation and UPS Sockets** are available throughout the Digital Area.

**Electrical Plug Adapters and Extensions** are available.

**E6 Photo Processing** is not available.

Rechargeable lithium batteries used for diving, photography and recreational equipment are encouraged to be charged within the Digital Area wherever possible. Power banks brought on board must be declared to the crew and stored in designated battery safety containers. Further information is available at [www.solitude.world/battery-safety-policy](http://www.solitude.world/battery-safety-policy).

## SOCIAL MEDIA

We encourage you to share your encounters with the fascinating new critters you'll undoubtedly encounter, as well as your enjoyable experiences with us. Feel free to follow, like and tag us on social media platforms:

**Instagram**

**Facebook**

[@solitude.world](https://www.instagram.com/solitude.world)

[@solitudeliveboardsandresorts](https://www.facebook.com/solitudeliveboardsandresorts)



# G A I A

# THE CABINS

---

Step into Solitude Gaia Palau, where comfort, style and adventure intertwine seamlessly. Featuring nine (9) meticulously designed cabins accommodating up to 18 guests, the vessel reflects thoughtfulness, elegance, and refinement. Each cabin serves as a serene retreat amidst the open sea, symbolising relaxation and refinement. Neutral hues and graceful furnishings establish a timeless atmosphere, fostering introspection and revitalisation.

These areas embody Solitude Gaia Palau's dedication to excellence, offering a spacious and welcoming setting where you can relax, engage with fellow travellers, and rediscover yourself. It's a realm where the peacefulness of the sea coexists harmoniously with the onboard comfort of Solitude Gaia Palau throughout your journey.

## OVERVIEW

### 9 Cabins in Total

- **Upper Deck** | **3 cabins in total, 303, 302, 301:** 2 x Ocean View Staterooms (2 Twin or Double Sharing), 1 x Ocean View Cabin (Double Sharing)
- **Main Deck** | **4 cabins in total, 204, 203, 202, 201:** 4 x Ocean View Cabins (2 Twin and Double Sharing)
- **Below Deck** | **2 cabins in total, 102, 101:** 2 x Interior Cabins (Twin or Double Sharing)

### Mattress Sizes

- King Mattresses 198cm x 202cm (Cabins 201 and 202)
- King Mattress 182cm x 202cm (Cabin 303)
- Single/Twin Mattresses 101cm x 202cm or 202cm x 204cm (Cabins 301, 302, 203, 204)
- Single/Twin Mattresses 100cm x 198cm or 200cm x 198cm (Cabins 101 and 102)

### Bathroom

Every cabin and stateroom on board is equipped with an en-suite shower (providing both hot and cold water) and a WC featuring a common water-flush system.)

### Cabin Comforts

- Individual air conditioning system with climate control
- A safe deposit box
- Bathrobes, face and bath towels
- Hair dryer
- Intercom
- Television
- Body wash, Shampoo and Conditioner
- Bedding including pillows, duvet, and sheets. Extra pillows and light blankets are available on request
- Wardrobe organiser with ample hangers
- Desk with universal electrical points conveniently located for gadgets

### En-suite Shower and Toilet

The cabin en-suite showers and toilets are thoughtfully designed to cater to the needs of modern-day users. While the size may vary depending on the cabin category, even the most compact cabins provide sufficient room, shelving, and space to accommodate your personal toiletries. All en-suite facilities are equipped with the following amenities:

- Manual bidet gun
- Separate shower
- Ample shelf/countertop and robe hooks

### Housekeeping Practice

Cabins are cleaned daily. Sheets, bath and face towels are changed every 3 days of use. However, please feel free to request a change at any time when necessary.

# SOLITUDE

# UPPER DECK

## Ocean View

### Stateroom Cabins 301 and 302:

Twin or Double  
Sharing

### Maximum Number of Guests:

2 (two)

### Mattress Size/s:

101cm x 202cm or  
202cm x 204cm

### Cabin Size (including WC/Shower):

21.4sqm

Stateroom Single-Supplement: +60%



### Stateroom Cabins' Sundeck

## Ocean View

### Cabin 303:

King Sharing

### Maximum Number of Guests:

2 (two)

### Mattress Size:

182cm x 202cm

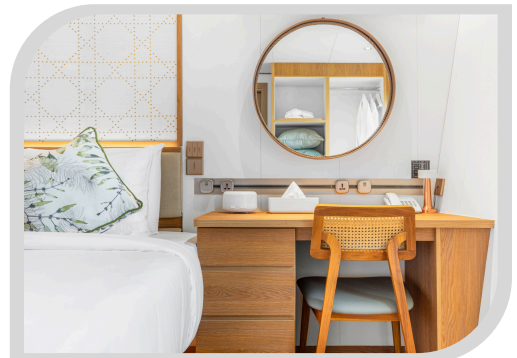
### Cabin Size (including WC/Shower):

15.1sqm

Single-Supplement: +60%



### Upper Deck Ensuite



# G A I A

# MAIN DECK



## Ocean View

**Cabins 203 to 204:**

Twin or Double  
Sharing

**Maximum Number of Guests:**

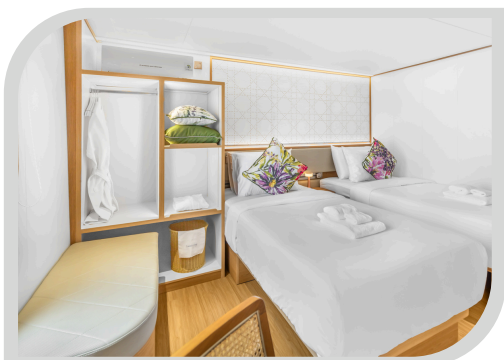
2 (two)

**Mattress Size/s:**

101cm x 202cm or  
204cm x 202cm

**Cabin Size (including WC/Shower):** 16.3sqm

Single-Supplement: +60%



## Ocean View

**Cabins 201 to 202:**

Double Sharing

**Maximum Number of Guests:**

2 (two)

**Mattress Size/s:**

198cm x 202cm

**Cabin Size (including WC/Shower):** 17.8sqm

Single-Supplement: +60%



**Main Deck Ensuite**

# SOLITUDE

# BELOW DECK

---



## Interior

**Cabins 101 and 102:**

Twin or Double  
Sharing

**Maximum Number of Guests:**

2 (two)

**Mattress Size/s:**

100cm x 198cm or  
200cm x 198cm

**Cabin Size** (including WC/Shower): 24.6sqm

Single-Supplement: +60%



# G A I A

# THE HOSPITALITY

---

**Entertainment** onboard entertainment includes smart TVs installed in every cabin, lounge, and dining area. The lounge features a Bose audio system designed to elevate your viewing experience, complementing the 65-inch smart TV. Additionally, guests have access to cards and board games for their leisure and enjoyment.

**Types of Coffee Available** onboard there is a fully automatic (self-service) ground coffee machine, local and instant coffee.

**Types of Tea Available** onboard, we maintain a diverse selection that includes Chamomile, English Breakfast, Ginger, Green, and Chinese teas, subject to availability.

**Drinking Water** free flow from potable water dispenser with additional 4-stage filtration.

**Alcoholic Beverages Available\*** beer, red/white/rose wine, and popular liquors, you may also BYO (at a reasonable amount - i.e. Philippines or Palau duty-free allowance) with no corkage charge. We do not allow any request to assist in personal purchases to stock alcoholic beverages as we conduct sales of alcoholic beverages on board.

**Non-alcoholic Beverages** are subject to availability, popular selections include light and zero options. Tonic and Soda water are also available.

**Self Serve Snacks** are available 24 hours.

**Ice Maker** available.

**Special Dietary Requests** with prior notice, we can cater to vegetarian and selective non-meat diets. However, for vegans, we kindly request advanced notice and a specific list of allowable ingredients for their meal preparation.

**Souvenirs\*** Solitude Gaia Palau apparel are still in progress, however, local souvenirs can be purchased when we take you to the local shopping mall.

**Onboard Guest Services\*** satellite internet and laundry services are available.

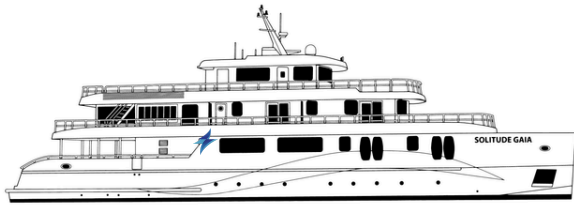
*\* are subject to additional costs*



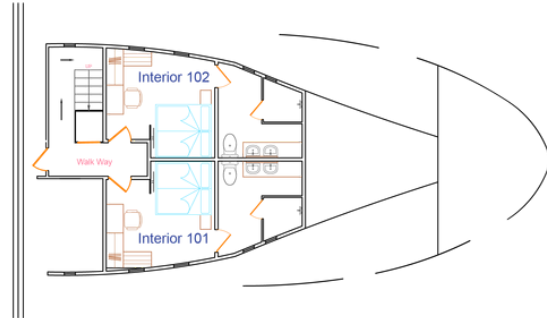
Bridge Sundeck

# SOLITUDE

# THE FLOOR PLANS



## BELOW DECK INTERIOR CABINS LAYOUT



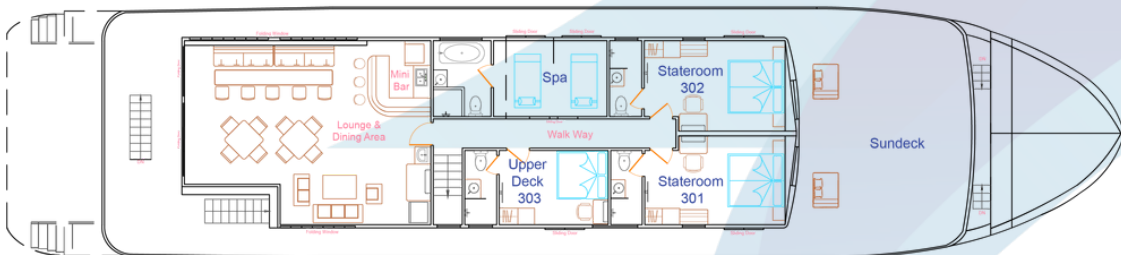
Interior Cabins 101 & 102 - Twin/Double Share

## MAIN DECK CABIN LAYOUT



Main Deck Cabins 201 & 202 - Double Share  
Main Deck Cabins 203 & 204 - Twin/Double Share

## STATEROOM & UPPER DECK CABIN LAYOUT



Stateroom 301 & 302 - Twin/Double Share  
Upper Deck 303 - Double Share

## NAVIGATION DECK

